

# Installation instructions, accessories

Volvo Car Corporation Gothenburg, Sweden

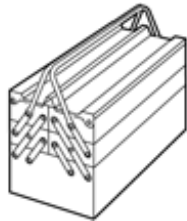
**Instruction No** 31346083    **Version** 1.0    **Part. No.** 31407107, 31350479, 31346554

## Towbar, control module (TRM)

### Equipment

# VIDA

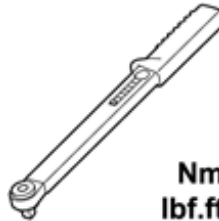
IMG-242205



IMG-345497

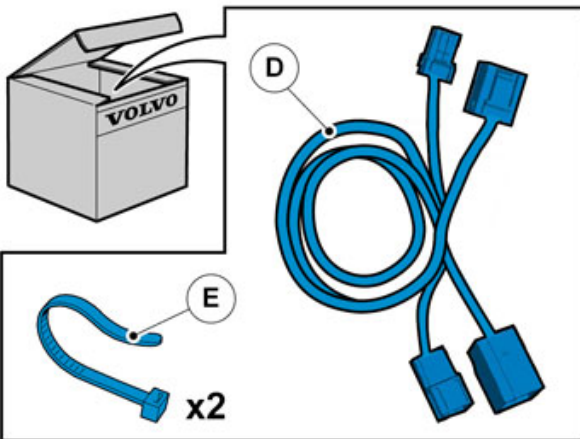
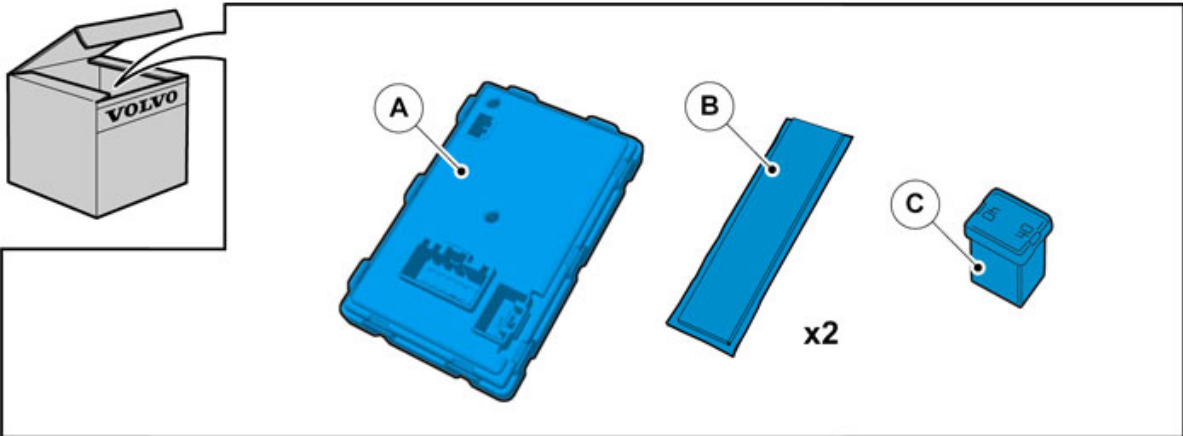


IMG-332314



IMG-239664

Nm  
lbf.ft



IMG-360181

# Installation instructions, accessories

Volvo Car Corporation Gothenburg, Sweden

---

## INTRODUCTION

Read through all of the instructions before starting installation.

Notifications and warning texts are for your safety and to minimise the risk of something breaking during installation.

Ensure that all tools stated in the instructions are available before starting installation.

Certain steps in the instructions are only presented in the form of images. Explanatory text is also given for more complicated steps.

In the event of any problems with the instructions or the accessory, contact your local Volvo dealer.

---

1



IMG-245980

Set the ignition key to position 0.

**Note!**

Wait at least one minute before unplugging the connectors or removing other electrical equipment.

---

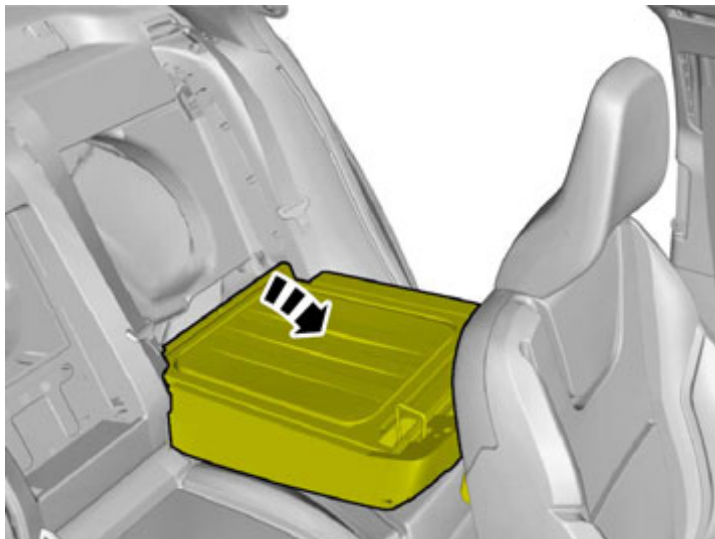
**Applies to the S60**

---

# Installation instructions, accessories

Volvo Car Corporation Gothenburg, Sweden

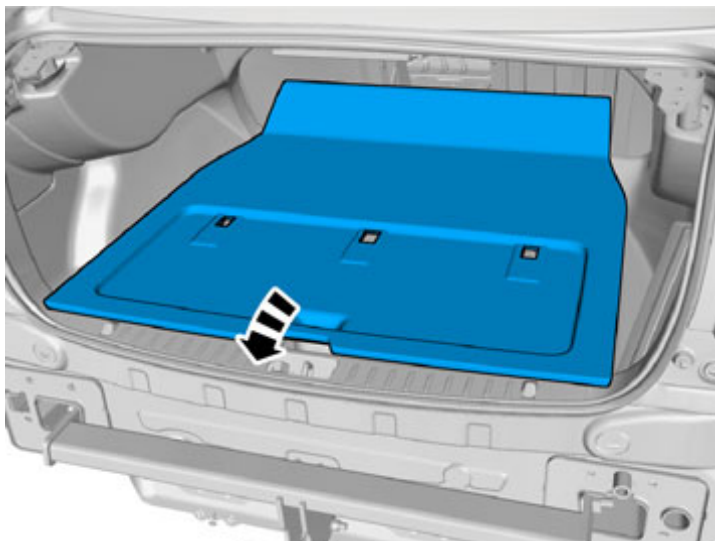
2



IMG-339894

Applies to the S60

3

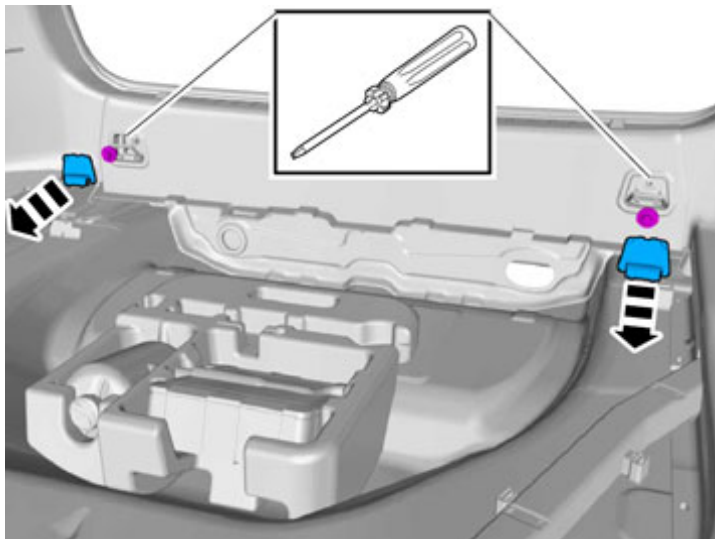


IMG-340180

# Installation instructions, accessories

Volvo Car Corporation Gothenburg, Sweden

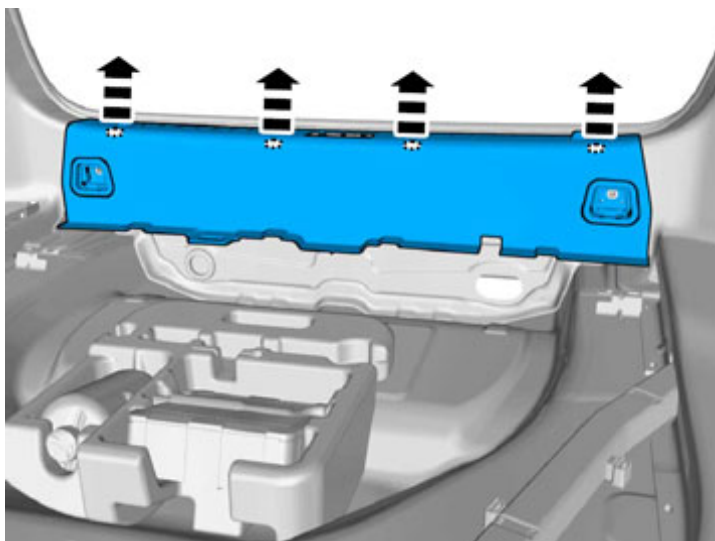
4



IMG-340028

Carefully pry off the covers and remove the screws.

5



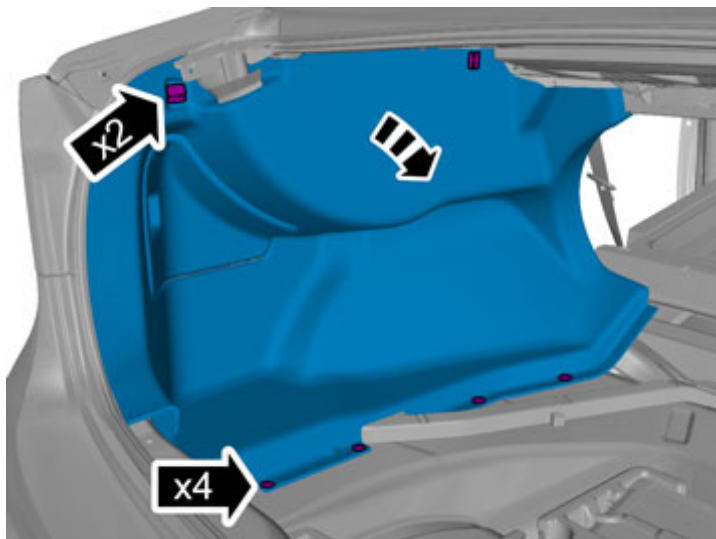
IMG-339896

Remove the panel.

# Installation instructions, accessories

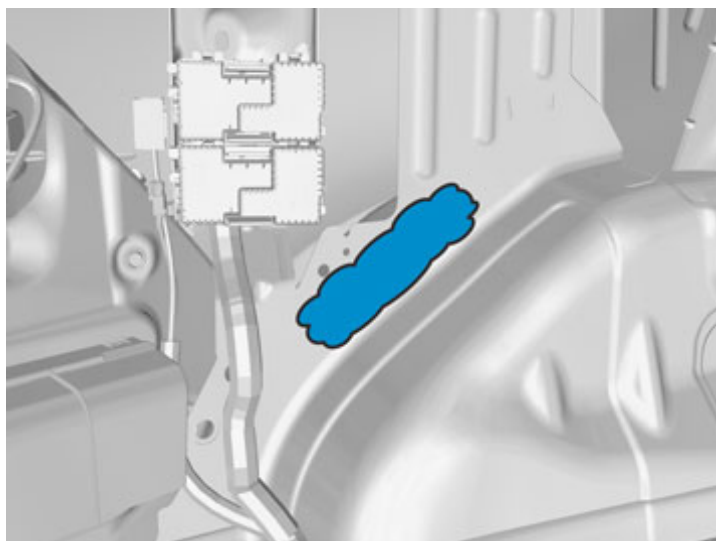
Volvo Car Corporation Gothenburg, Sweden

6



IMG-340029

7



IMG-361427

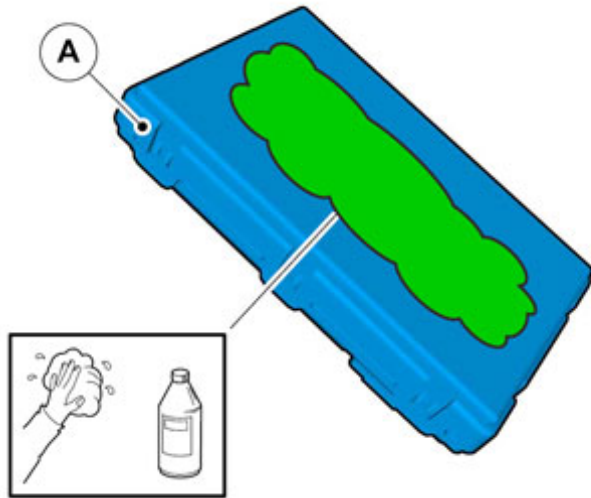
Use: Isopropanol, P/N 1161721

Wipe dry.

# Installation instructions, accessories

Volvo Car Corporation Gothenburg, Sweden

8

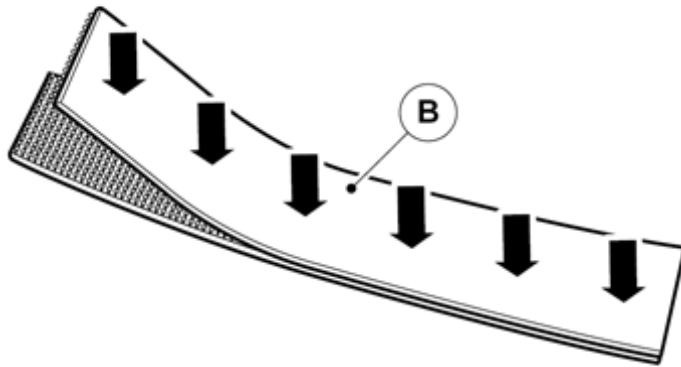


IMG-360218

Use: Isopropanol, P/N 1161721

Wipe dry.

9



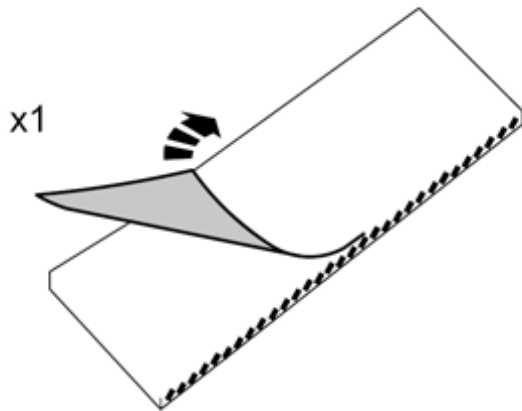
IMG-356181

Take the two Velcro straps from the kit and press them together edge to edge.

# Installation instructions, accessories

Volvo Car Corporation Gothenburg, Sweden

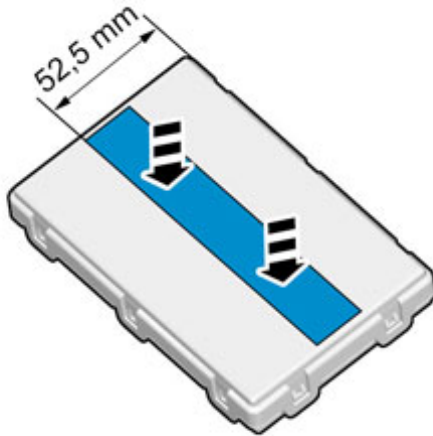
10



Remove the protective backing tape from one side of the Velcro straps.

IMG-360227

11



When installing Velcro tape the surface must maintain a temperature of at least +20 ° C (68°F).

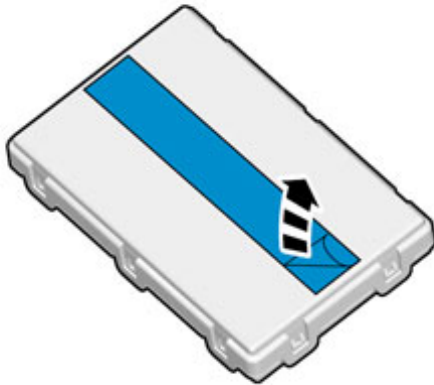
IMG-360231

# Installation instructions, accessories

Volvo Car Corporation Gothenburg, Sweden

12

Remove the masking tape.



IMG-360236

13

When installing Velcro tape the surface must maintain a temperature of at least +20 ° C (68°F).

Press the control module into place properly.



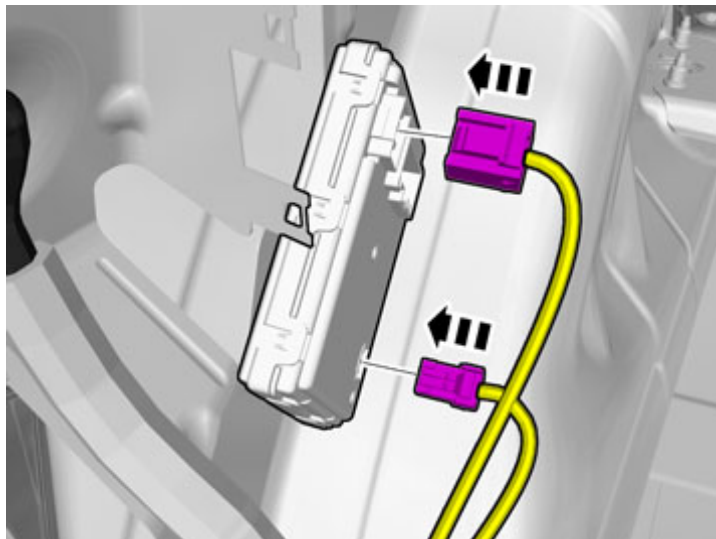
IMG-361429



# Installation instructions, accessories

Volvo Car Corporation Gothenburg, Sweden

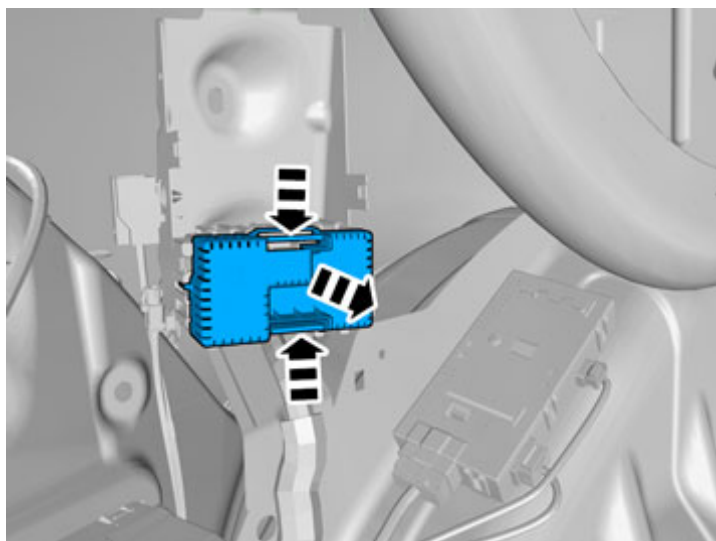
14



IMG-361430

Connect the pre-routed connectors to the control module.  
Found in the connection to the rear fuse holder.

15



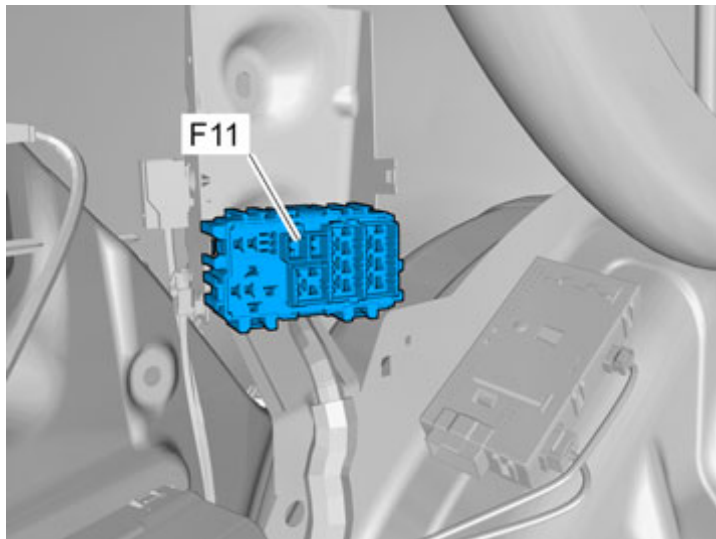
IMG-340109

Remove the cover.

# Installation instructions, accessories

Volvo Car Corporation Gothenburg, Sweden

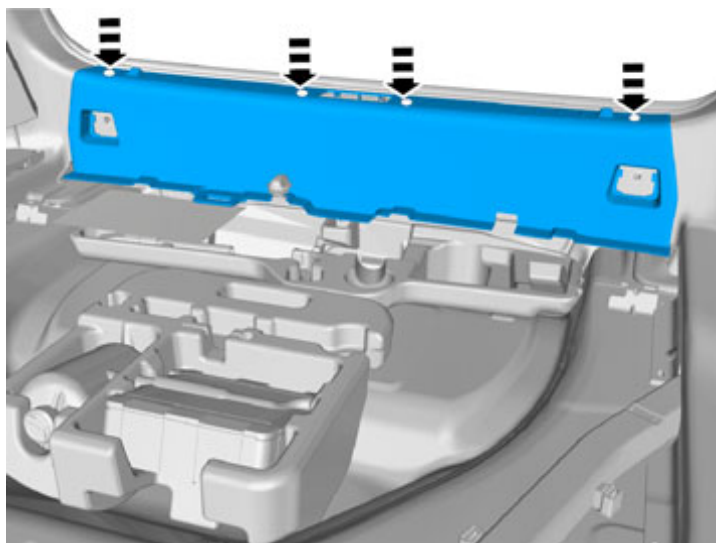
16



IMG-340105

Fit a 40 A fuse in position F11.

17

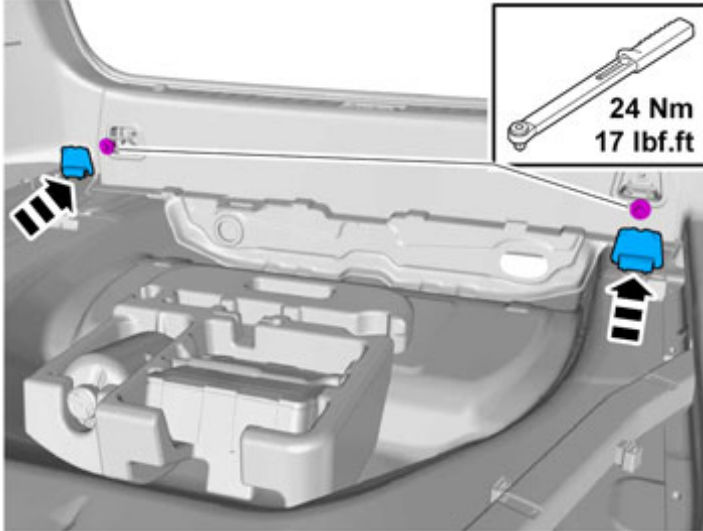


IMG-340201

# Installation instructions, accessories

Volvo Car Corporation Gothenburg, Sweden

18

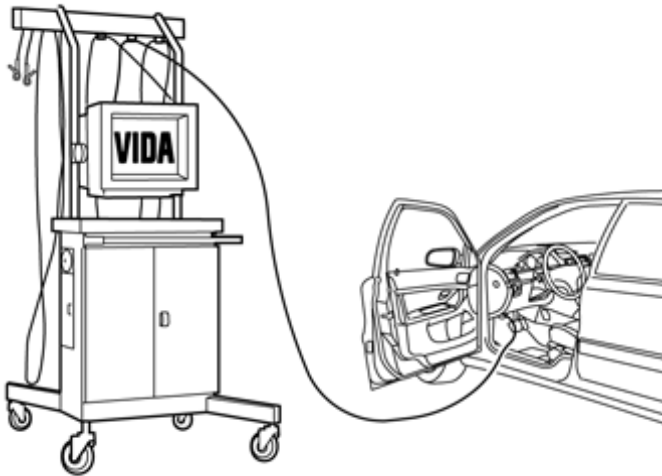


IMG-339899

19

Reinstall the detached components in reverse order.

20



IMG-242268

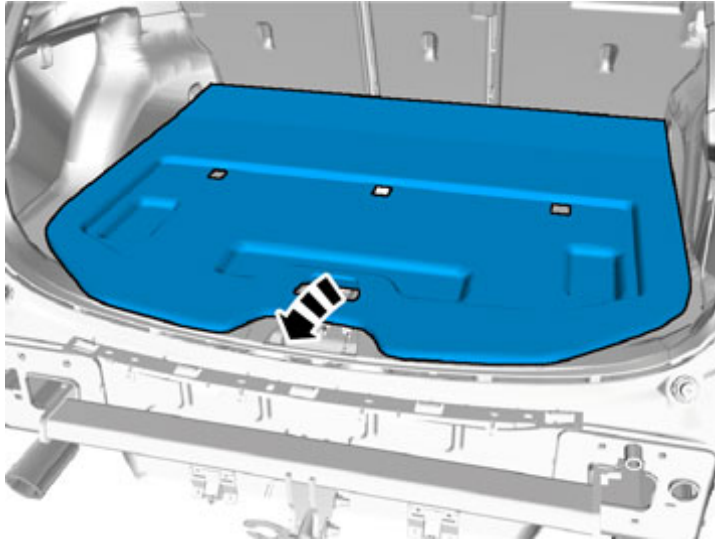
Download the software for the accessory's function following the service information in VIDA.

See VIDA or the accessories catalogue for software part number.

# Installation instructions, accessories

Volvo Car Corporation Gothenburg, Sweden

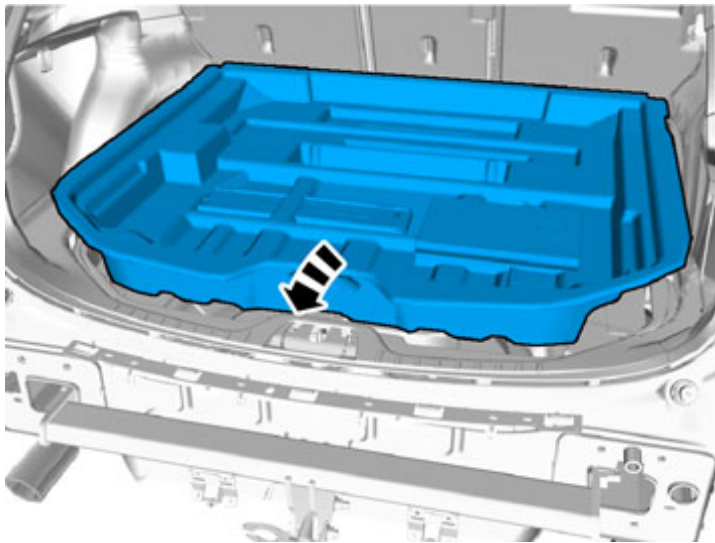
21



IMG-342225

Applies to the V60

22

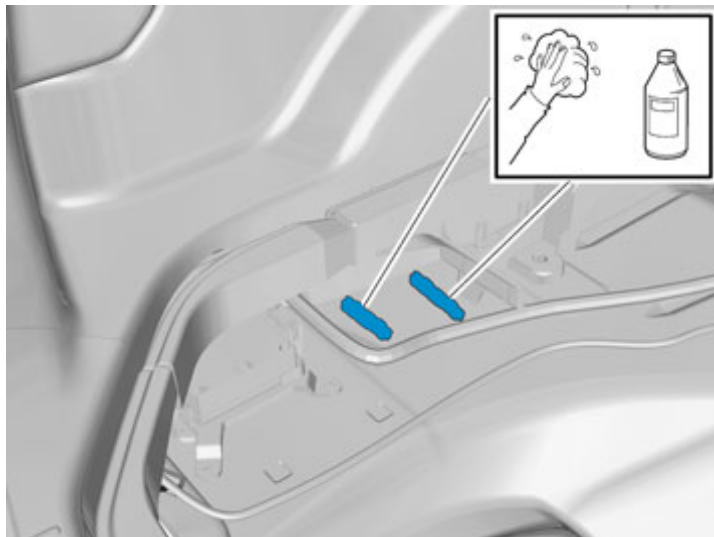


IMG-342227

# Installation instructions, accessories

Volvo Car Corporation Gothenburg, Sweden

23

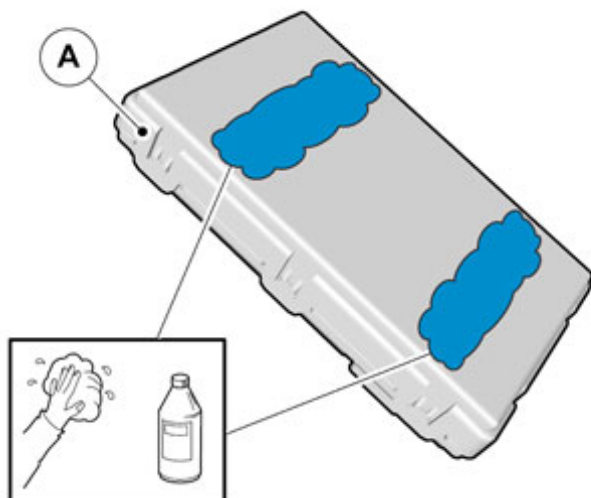


IMG-361456

Use: Isopropanol, P/N 1161721

Wipe dry.

24



IMG-356179

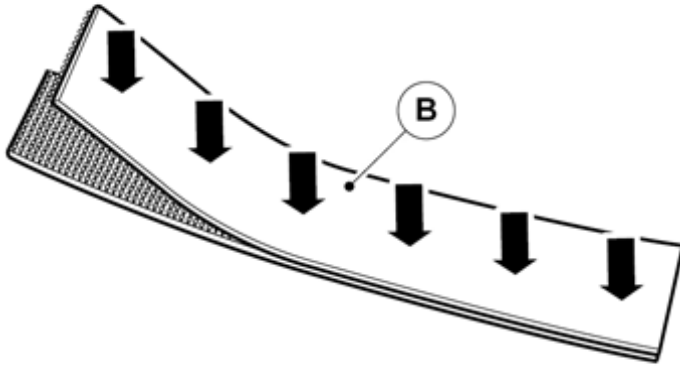
Use: Isopropanol, P/N 1161721

Wipe dry.

# Installation instructions, accessories

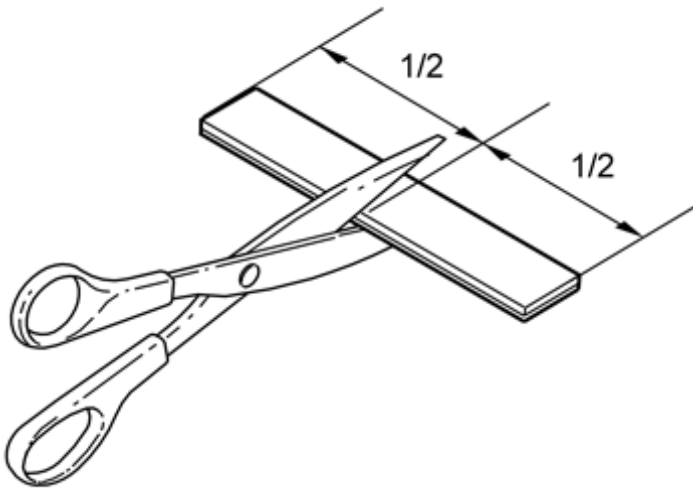
Volvo Car Corporation Gothenburg, Sweden

25



IMG-356181

26

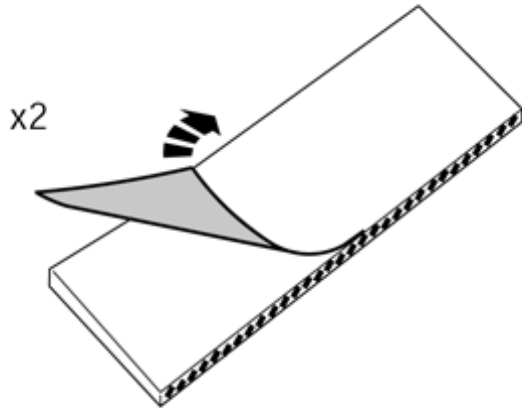


IMG-222282

# Installation instructions, accessories

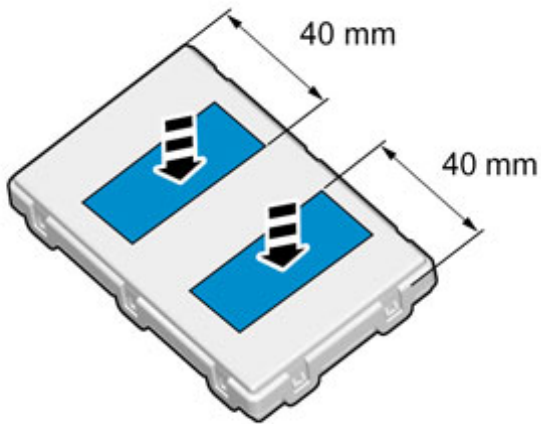
Volvo Car Corporation Gothenburg, Sweden

27



IMG-241925

28



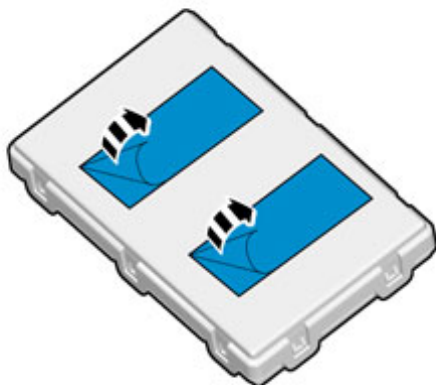
When installing Velcro tape the surface must maintain a temperature of at least +20 ° C (68°F).

IMG-356351

# Installation instructions, accessories

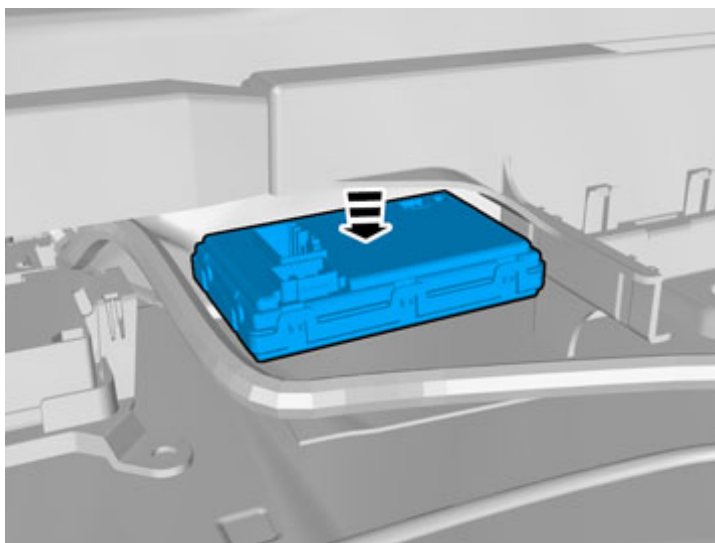
Volvo Car Corporation Gothenburg, Sweden

29



IMG-356352

30



IMG-361461

When installing Velcro tape the surface must maintain a temperature of at least +20 ° C (68°F).

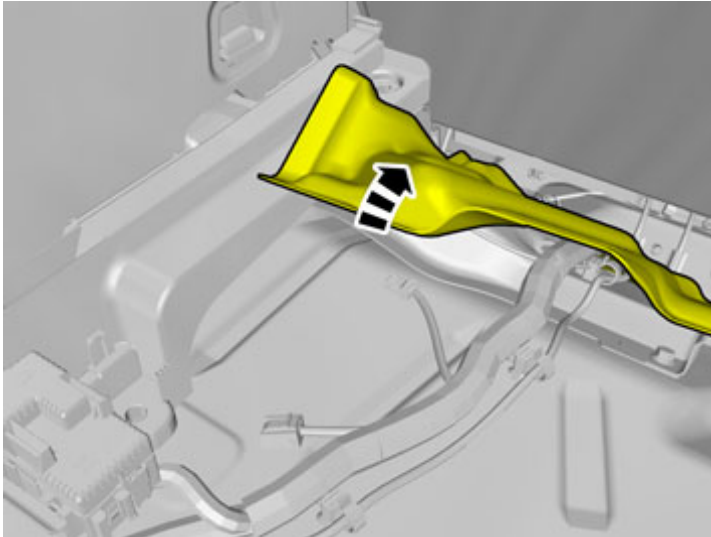
Press the control module onto the luggage compartment onto the cleaned surface.



# Installation instructions, accessories

Volvo Car Corporation Gothenburg, Sweden

31

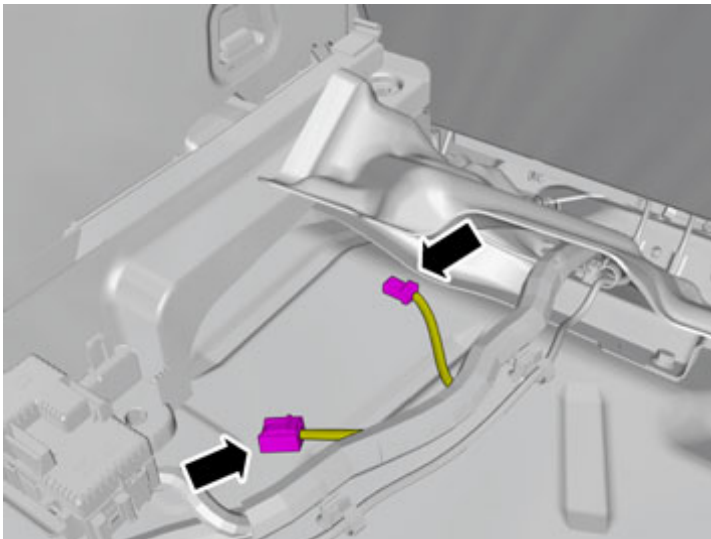


IMG-342289

**Applies to cars with model year up to and including -2012**

Fold up the insulation mat at the front edge on the left-hand side in the cargo compartment.

32



IMG-361448

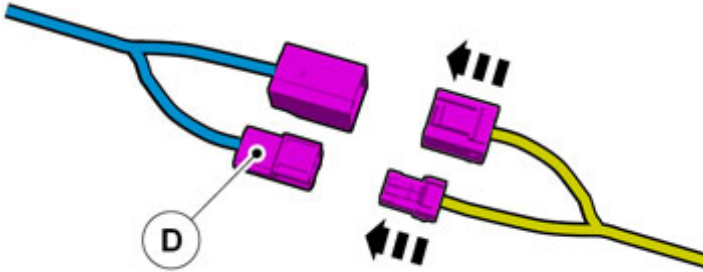
Locate the connectors in the car's cable harness.

# Installation instructions, accessories

Volvo Car Corporation Gothenburg, Sweden

33

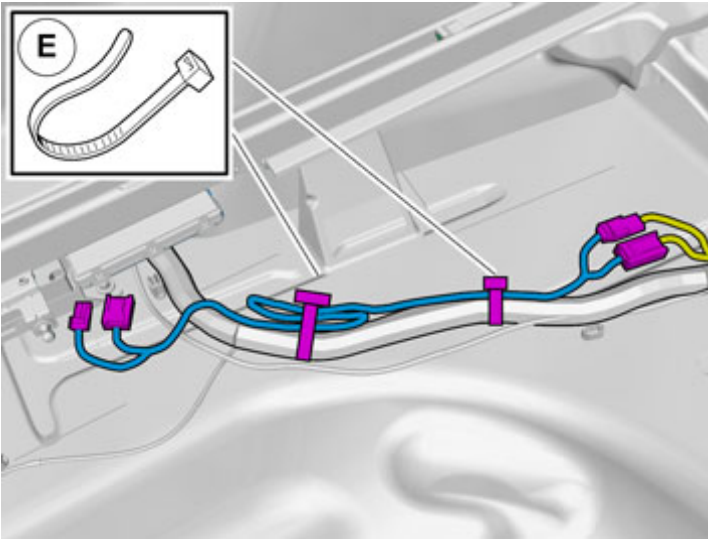
Connect the extension cable to the located connector.



IMG-360183

34

Route the extension cable following the existing cable harness.  
Use cable ties to secure any excess.

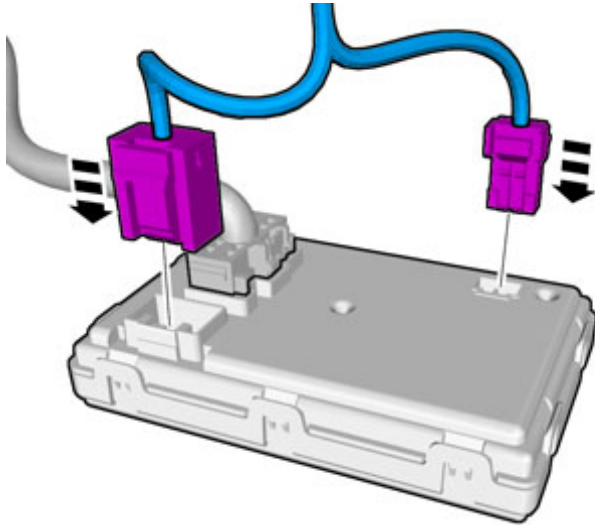


IMG-360336

# Installation instructions, accessories

Volvo Car Corporation Gothenburg, Sweden

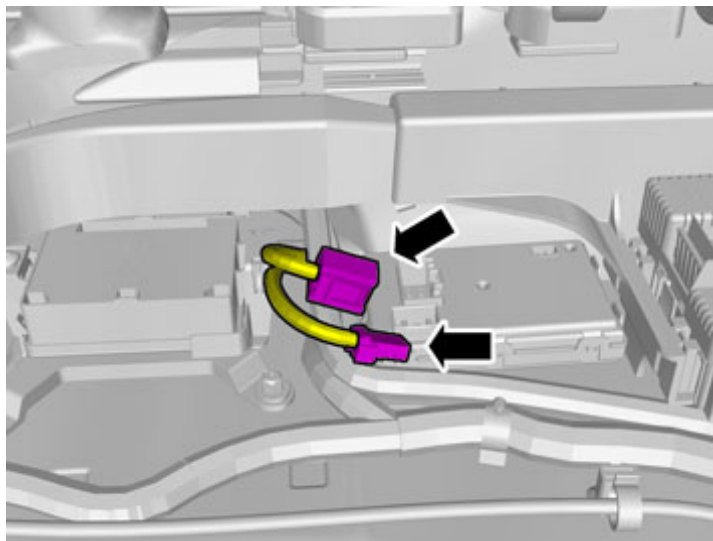
35



IMG-361449

Connect the connectors from the extension wiring to the control module.

36



IMG-361481

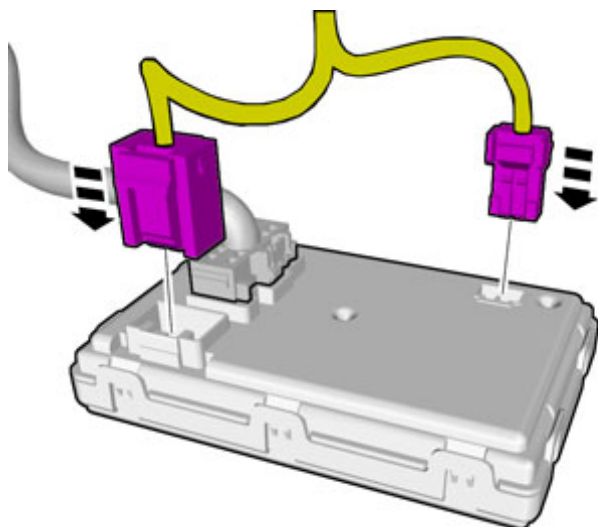
**Applies to cars with model year from and including 2013-**

Locate the connectors in the car's cable harness.

# Installation instructions, accessories

Volvo Car Corporation Gothenburg, Sweden

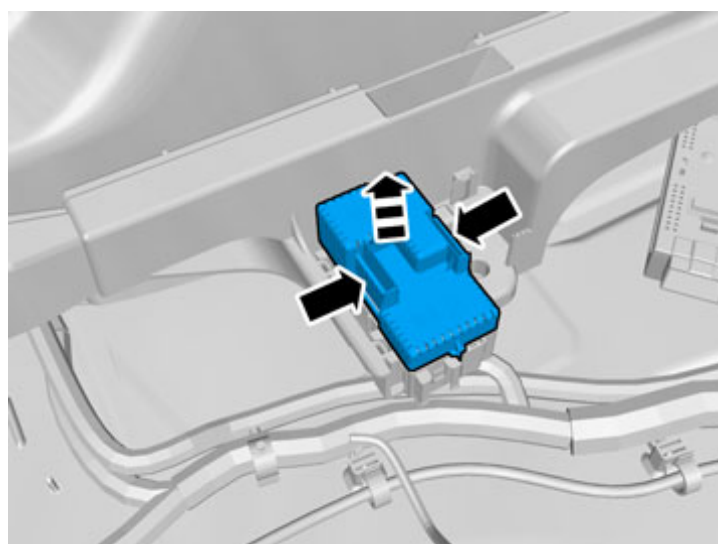
37



IMG-361483

Connect the connectors to the control module.

38



IMG-342291

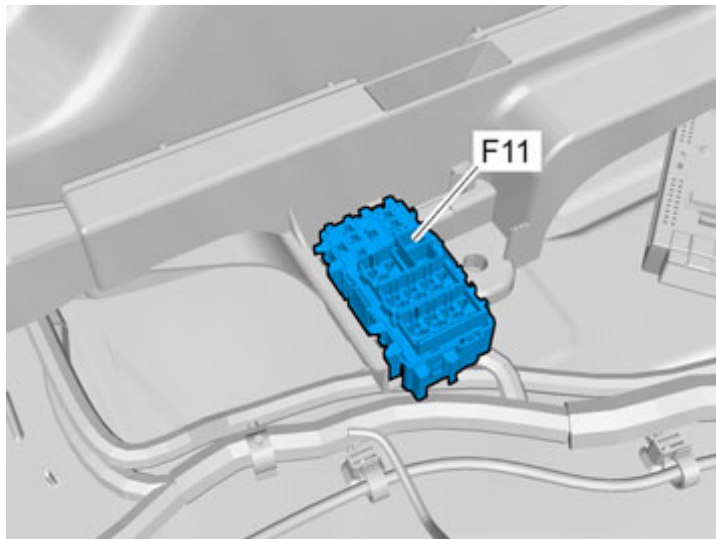
**Applies to all models**

Remove the black cover on the fuse holder

# Installation instructions, accessories

Volvo Car Corporation Gothenburg, Sweden

39



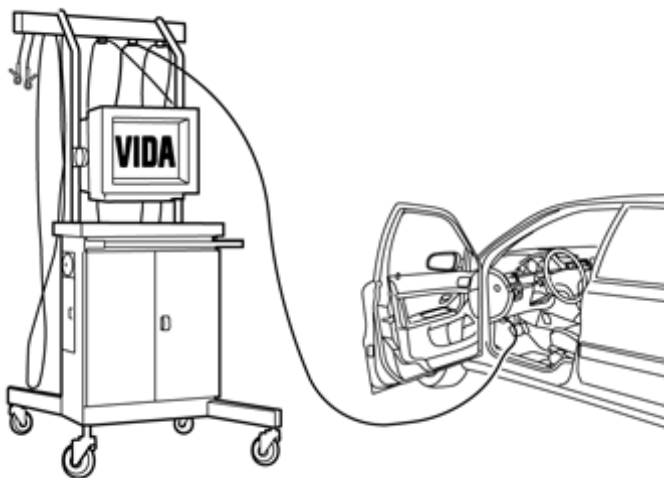
IMG-342292

Fit a 40 A fuse in position F11.

40

Reinstall the detached components in reverse order.

41



IMG-242268

Download the software for the accessory's function following the service information in VIDA.

See VIDA or the accessories catalogue for software part number.