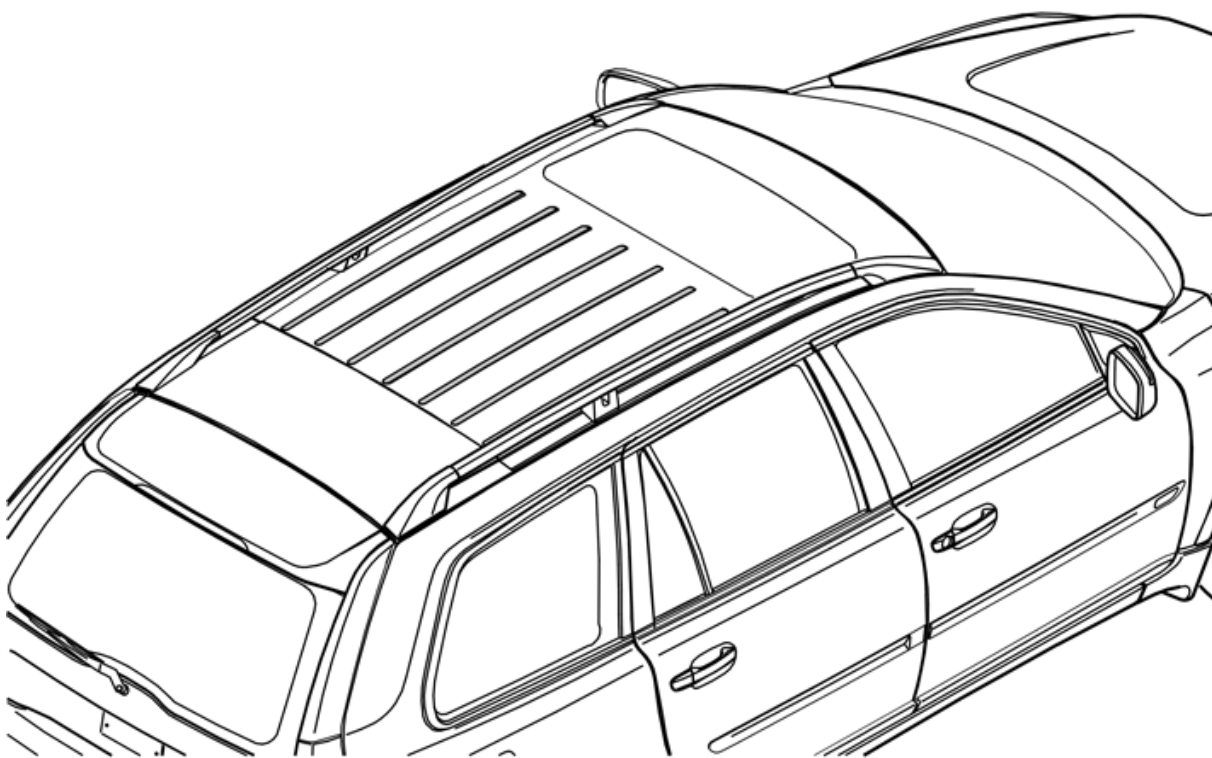


Installation instructions, accessories

Volvo Car Corporation Gothenburg, Sweden

Instruction No	Version	Part. No.
30664038	1.2	30796081, 8671194, 31285189

Roof protection ribs



R8902726

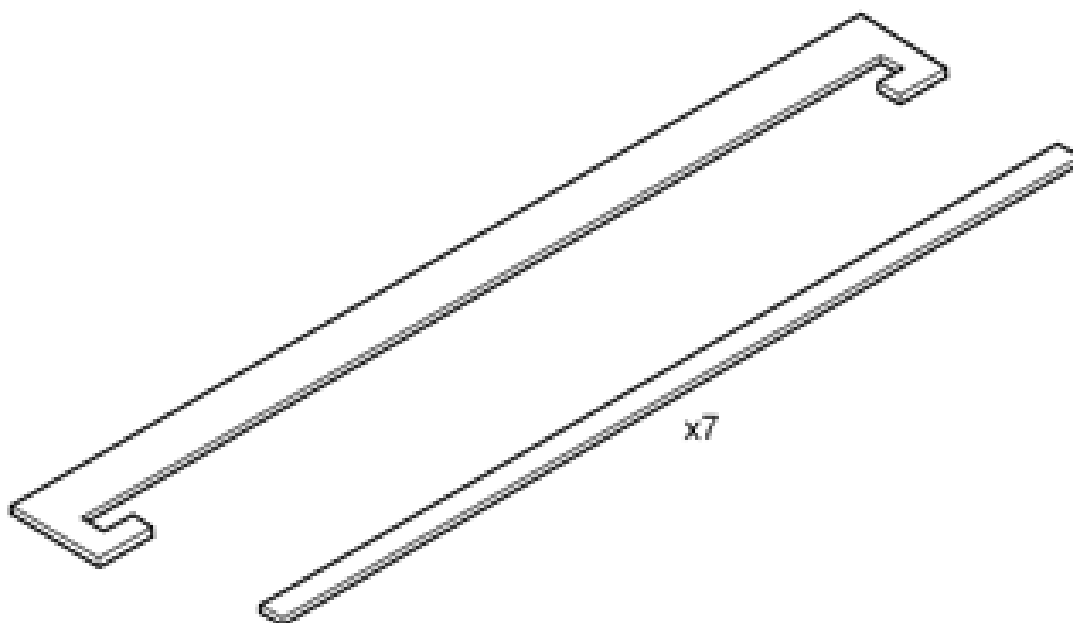
Equipment



A0000159

Installation instructions, accessories

Volvo Car Corporation Gothenburg, Sweden



R8902725

Installation instructions, accessories

Volvo Car Corporation Gothenburg, Sweden

INTRODUCTION

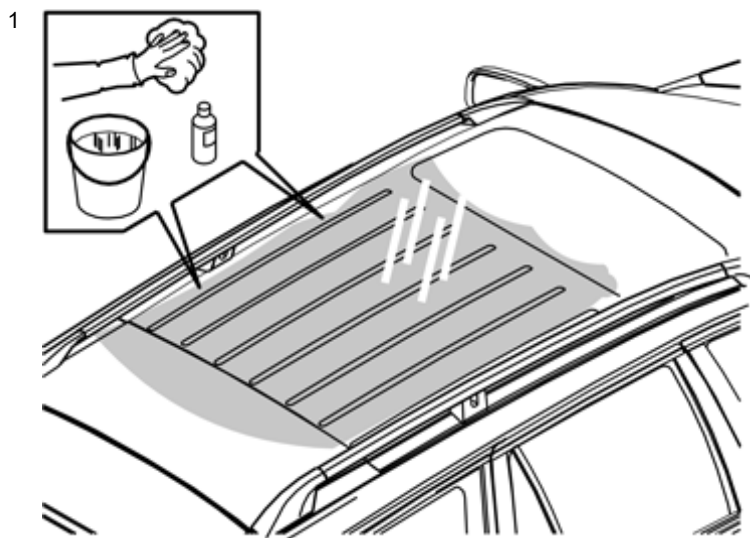
Read through all of the instructions before starting installation.

Notifications and warning texts are for your safety and to minimise the risk of something breaking during installation.

Ensure that all tools stated in the instructions are available before starting installation.

Certain steps in the instructions are only presented in the form of images. Explanatory text is also given for more complicated steps.

In the event of any problems with the instructions or the accessory, contact your local Volvo dealer.



R8902727

Remove the load carriers from the car (if equipped)

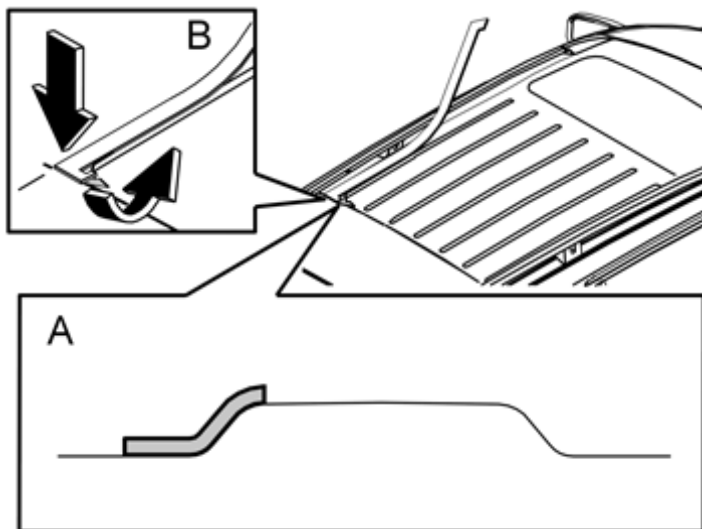
Wash the car

Wash the area of the car roof where the roof protector ribs are to be installed using a mixture of windscreen washer fluid and water. Mix 30%/70%. The temperature of the car must be at least 15°C (60°F) when installing the roof protector ribs.

Installation instructions, accessories

Volvo Car Corporation Gothenburg, Sweden

2



R8902728

Take the guide moulding from the kit. Pull off a piece of the tape.

Note!

Take care when installing the guide moulding. The front-rear edge of the guide moulding must be positioned on the raised ridge where the flat surface starts to bend, illustration A. The rear edge of the guide moulding must be positioned in the corresponding way at the roof joint.

Position the guide moulding as above at one of the front-rear raised ridges on the roof, illustration B

Pull the backing off the guide moulding as it is pressed over the raised ridge.

Note!

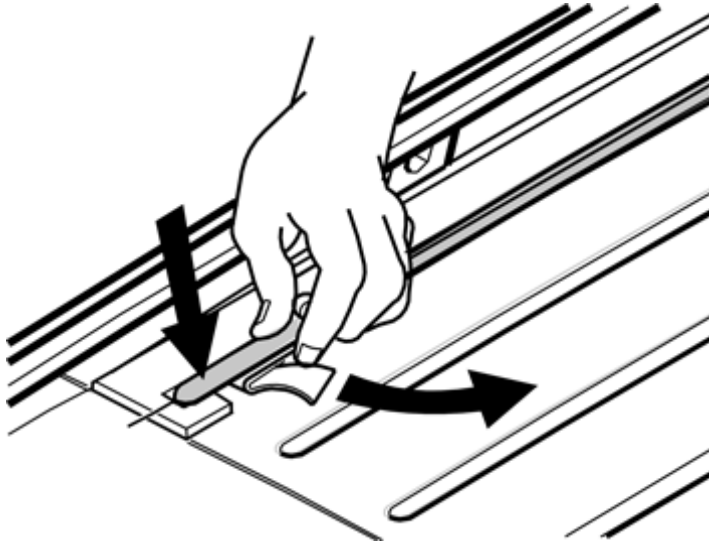
Use pieces of tape to secure the guide moulding so that it does not move when installing the roof protector rib.

Check that the guide moulding is straight by standing behind the car and looking along the guide moulding and the embossing on the roof.

Installation instructions, accessories

Volvo Car Corporation Gothenburg, Sweden

3



R8902729

Take a roof protector rib from the kit (one at a time). Position the rib on the raised ridge along the edge of the guide moulding edge to edge with the rear end on the guide moulding cut-out

Lift the rear end of the roof protection rib and pull off the backing.

Note!

The tape on the roof protector ribs bonds immediately and can be moved from side to side. The tape on the roof protector ribs is easily stretched.

It is important that force is applied at right angles to the roof protector ribs so that the ribs do not stretch and will not align with the cut-out in the guide moulding.

Take great care during the installation. Ensure that the ribs are positioned along and parallel to the installed guide moulding.

Pull the backing off while pressing down the roof protector rib following the guide moulding

Lift off the guide moulding

Caution!

Carefully press the roof protector rib by hand so that the tape secures over the entire contact surface. Press hard repeatedly along the entire length of the roof protector rib. It is particularly important at the end of the roof protector ribs.

Repeat points 2 and 3 for the remaining roof protector ribs.

Note!

After installing the roof protector ribs, the car must not be exposed to temperatures lower than 15°C (60°F) for 8 hours. Do not wash the car for 72 hours after installing the roof protector ribs.