



# Installation instructions, accessories

Volvo Car Corporation Gothenburg, Sweden

<b>Instruction No</b>	<b>Version</b>	<b>Part. No.</b>
31399623	1.0	31399203

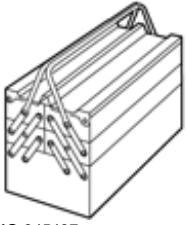
## Sun curtain



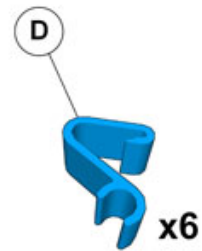
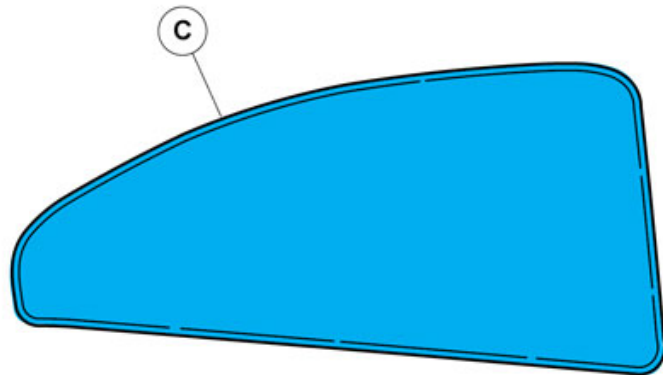
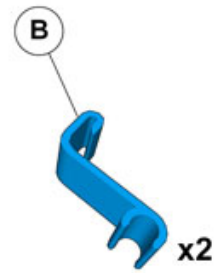
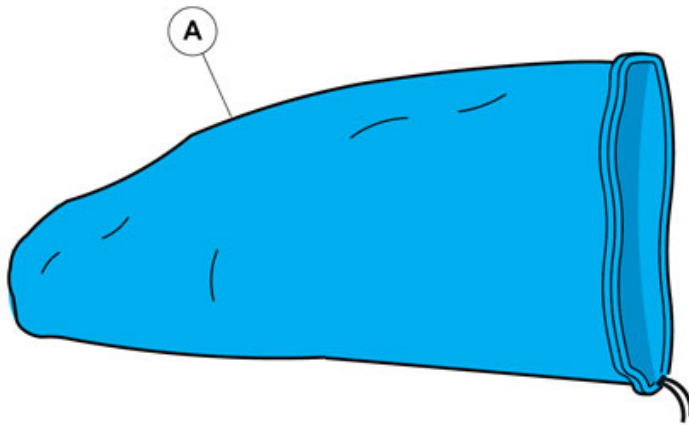
# Installation instructions, accessories

Volvo Car Corporation Gothenburg, Sweden

## Equipment



IMG-345497



IMG-379618



# Installation instructions, accessories

Volvo Car Corporation Gothenburg, Sweden

## Information

1

Read through all of the instructions before starting installation.

Notifications and warning texts are for your safety and to minimise the risk of something breaking during installation.

Ensure that all tools stated in the instructions are available before starting installation.

Certain steps in the instructions are only presented in the form of images. Explanatory text is also given for more complicated steps.

In the event of any problems with the instructions or the accessory, contact your local Volvo dealer.

## Color symbols

2



### Note!

This colour chart displays (in colour print and electronic version) the importance of the different colours used in the images of the method steps.

1. Used for focused component, the component with which you will do something.
2. Used as extra colors when you need to show or differentiate additional parts.
3. Used for attachments that are to be removed/installed. May be screws, clips, connectors, etc.
4. Used when the component is not fully removed from the vehicle but only hung to the side.
5. Used for standard tools and special tools.
6. Used as background color for vehicle components.

IMG-363036

## Accessory installation



# Installation instructions, accessories

Volvo Car Corporation Gothenburg, Sweden

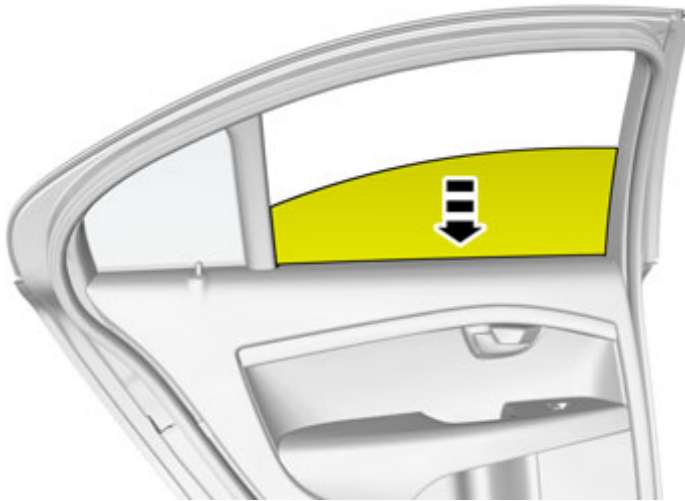
3

Set the ignition key to position I.



IMG-332194

4



IMG-379619



# Installation instructions, accessories

Volvo Car Corporation Gothenburg, Sweden

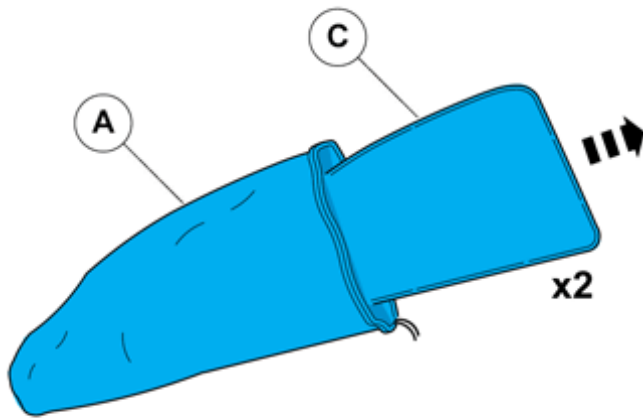
5

Set the ignition key to position 0.



IMG-245980

6



IMG-379621



# Installation instructions, accessories

Volvo Car Corporation Gothenburg, Sweden

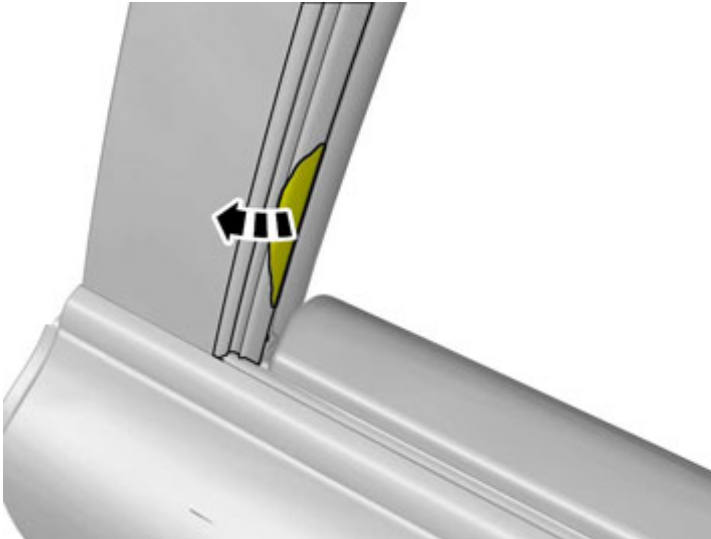
7



**Note!**  
Orientation view

IMG-379622

8



IMG-379624

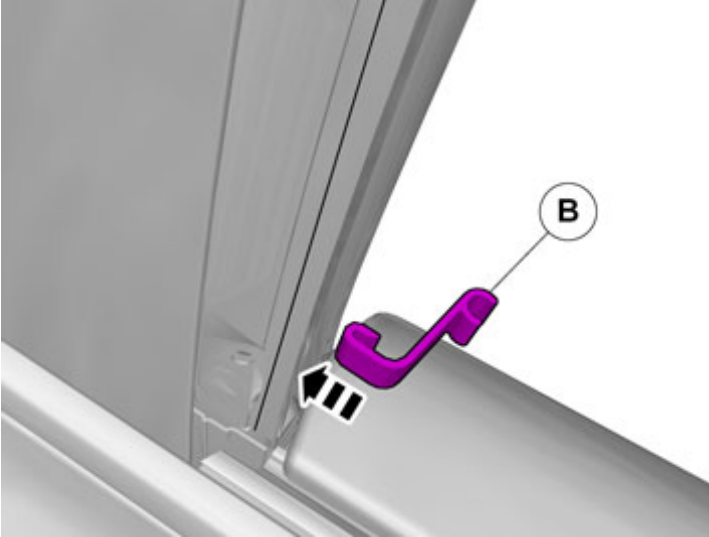


# Installation instructions, accessories

Volvo Car Corporation Gothenburg, Sweden

9

Install the clip(s).



IMG-379630

10



IMG-379633



# Installation instructions, accessories

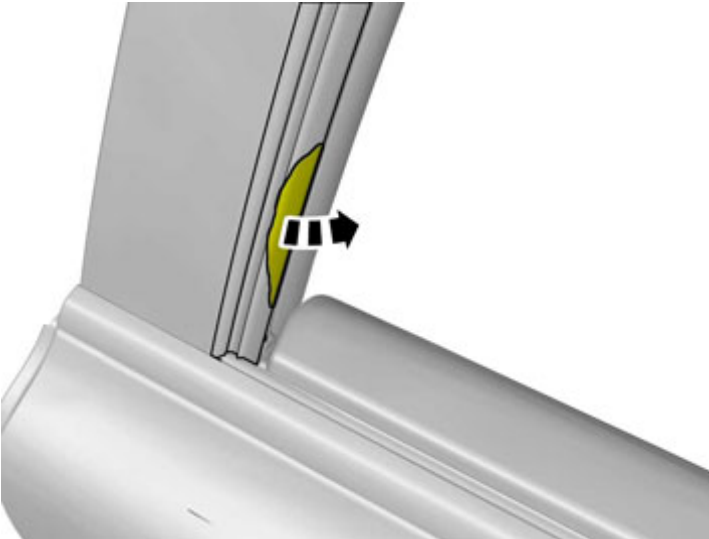
Volvo Car Corporation Gothenburg, Sweden

11



IMG-379634

12



IMG-379651

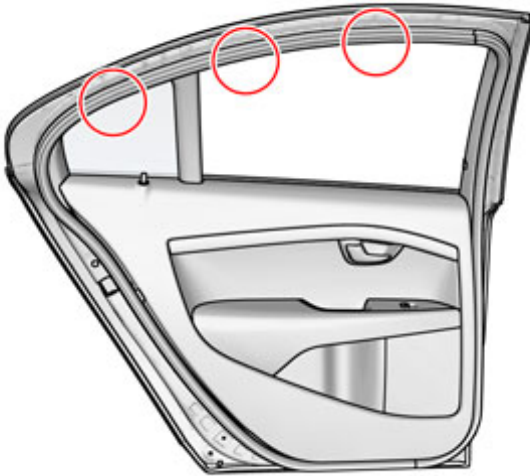




# Installation instructions, accessories

Volvo Car Corporation Gothenburg, Sweden

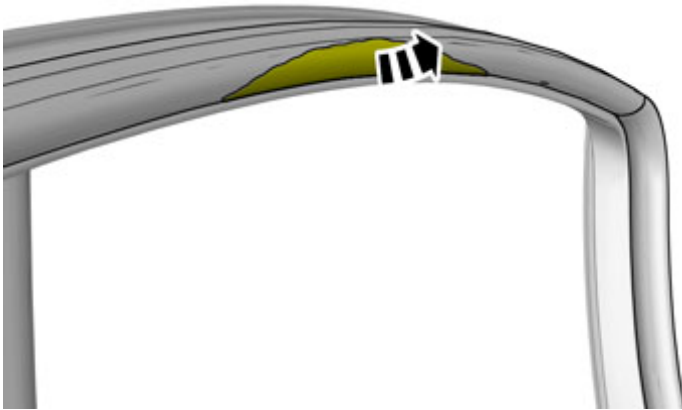
13



**Note!**  
Orientation view

IMG-379636

14



IMG-379638

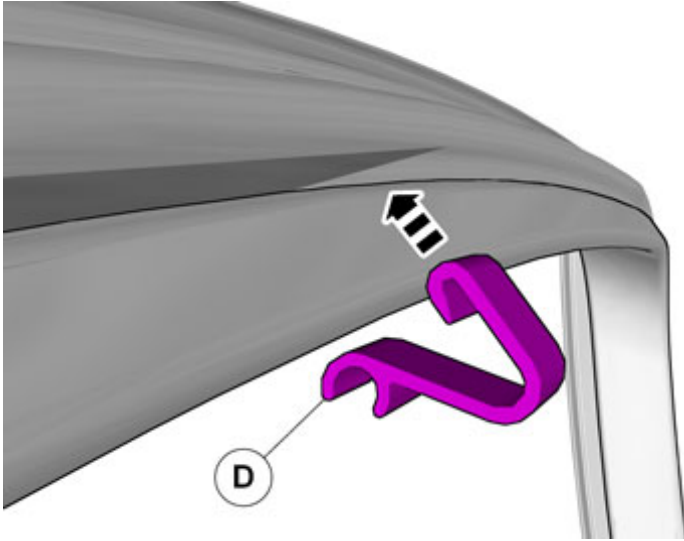


# Installation instructions, accessories

Volvo Car Corporation Gothenburg, Sweden

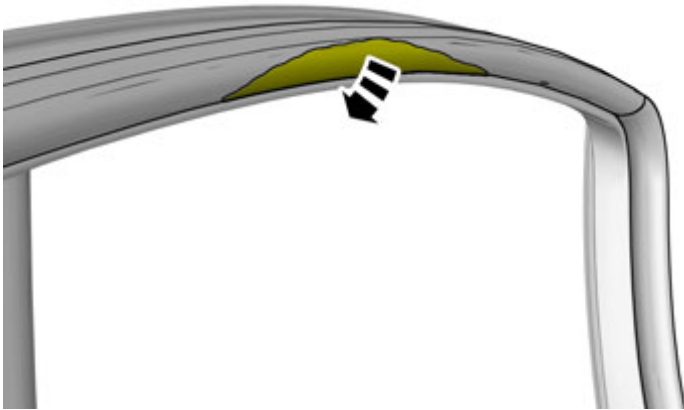
15

Install the clip(s).



IMG-379640

16



IMG-379652



# Installation instructions, accessories

Volvo Car Corporation Gothenburg, Sweden

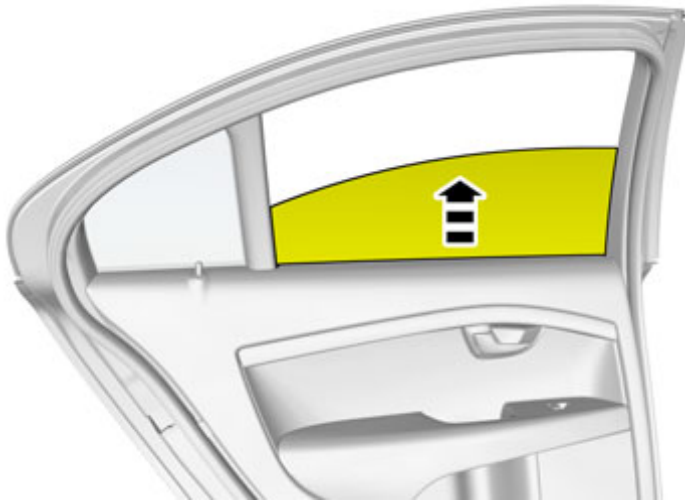
17

Set the ignition key to position I.



IMG-332194

18



IMG-379620

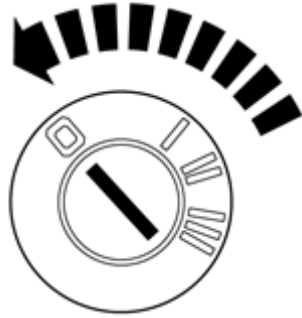


# Installation instructions, accessories

Volvo Car Corporation Gothenburg, Sweden

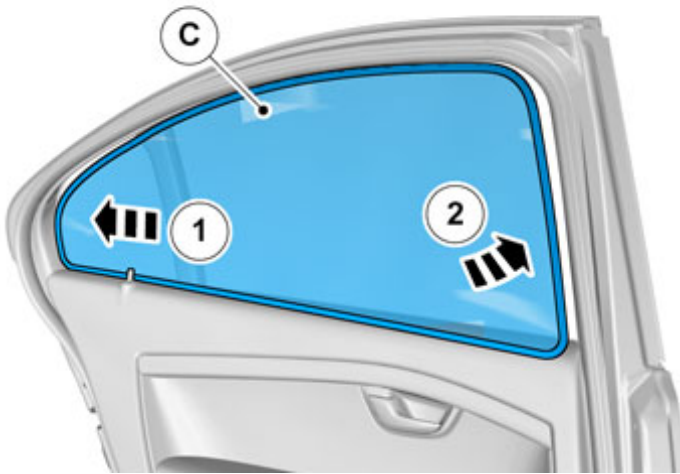
19

Set the ignition key to position 0.



IMG-245980

20



IMG-379648

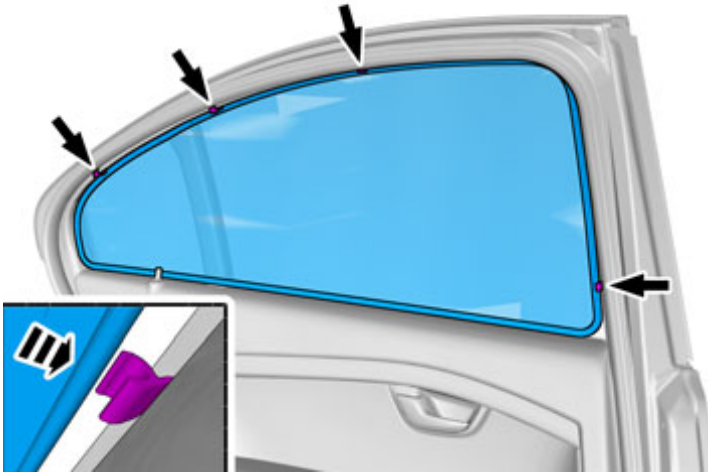


# Installation instructions, accessories

Volvo Car Corporation Gothenburg, Sweden

21

Repeat all method steps for the other side.



IMG-379650