



Installation instructions, accessories

Volvo Car Corporation Gothenburg, Sweden

Instruction No	Version	Part. No.
31454167	1.0	31316843

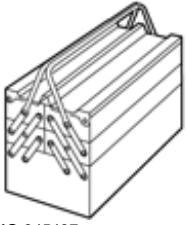
Steering deflection limiter



Installation instructions, accessories

Volvo Car Corporation Gothenburg, Sweden

Equipment

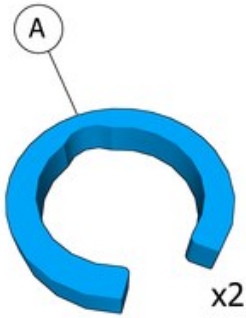


IMG-345497



IMG-239664

Nm
lbf.ft



IMG-401618



Installation instructions, accessories

Volvo Car Corporation Gothenburg, Sweden

Information

1

Read through all of the instructions before starting installation.

Notifications and warning texts are for your safety and to minimise the risk of something breaking during installation.

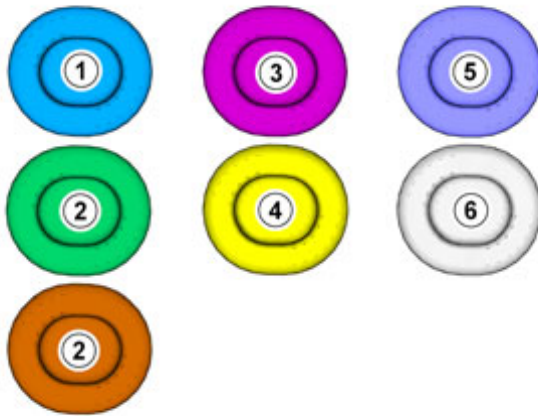
Ensure that all tools stated in the instructions are available before starting installation.

Certain steps in the instructions are only presented in the form of images. Explanatory text is also given for more complicated steps.

In the event of any problems with the instructions or the accessory, contact your local Volvo dealer.

Color symbols

2



Note!

This colour chart displays (in colour print and electronic version) the importance of the different colours used in the images of the method steps.

1. Used for focused component, the component with which you will do something.
2. Used as extra colors when you need to show or differentiate additional parts.
3. Used for attachments that are to be removed/installed. May be screws, clips, connectors, etc.
4. Used when the component is not fully removed from the vehicle but only hung to the side.
5. Used for standard tools and special tools.
6. Used as background color for vehicle components.

IMG-363036

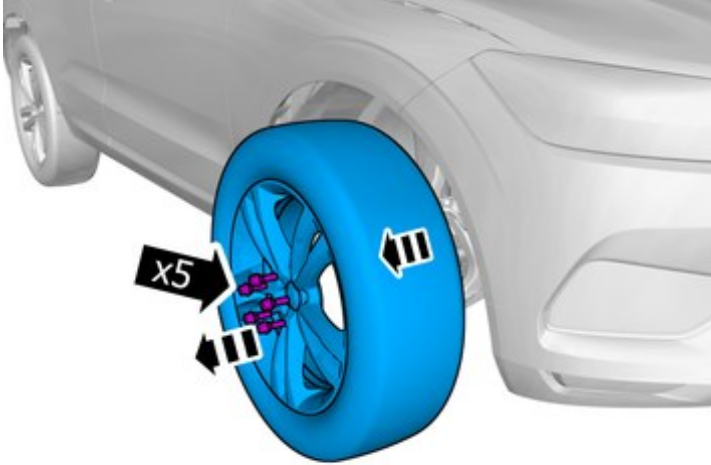
Removal



Installation instructions, accessories

Volvo Car Corporation Gothenburg, Sweden

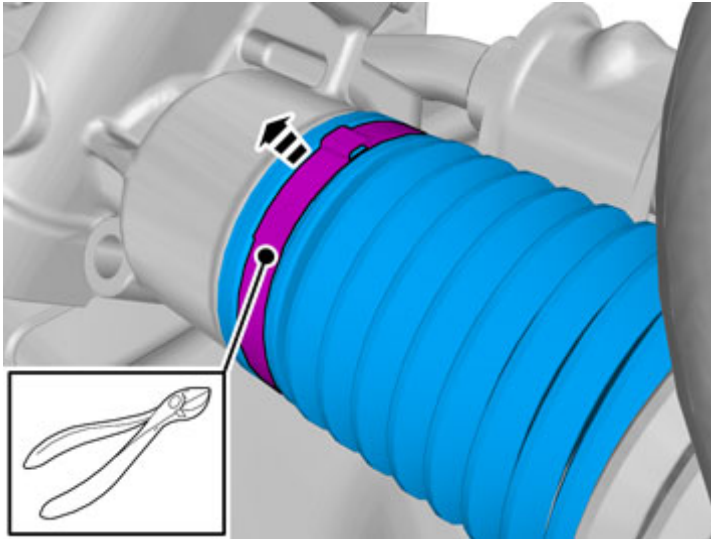
3



Remove the screws.

IMG-401658

4



The part is not to be reused.

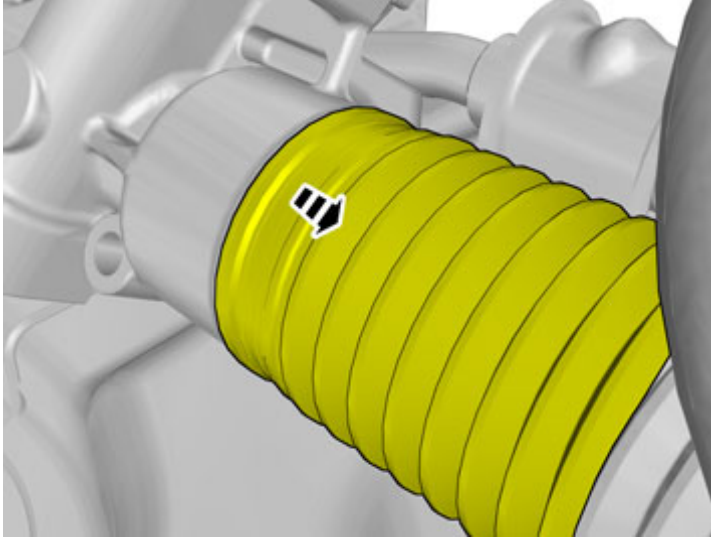
IMG-383055



Installation instructions, accessories

Volvo Car Corporation Gothenburg, Sweden

5

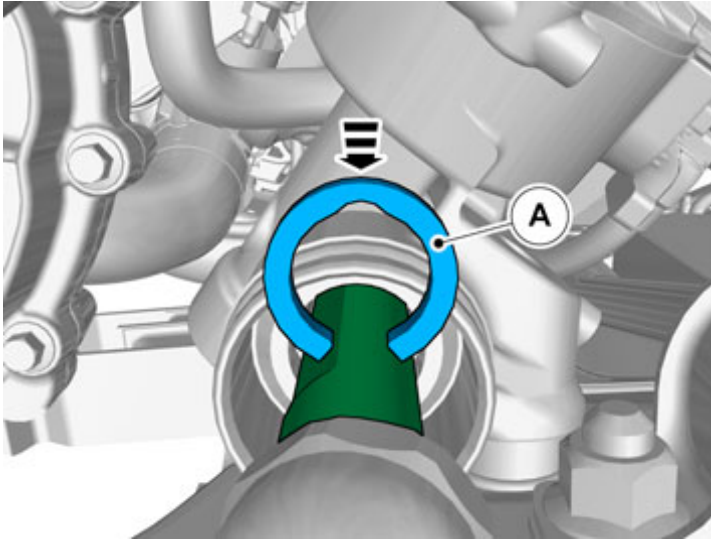


IMG-383062

Fold marked part to one side.

Accessory installation

6



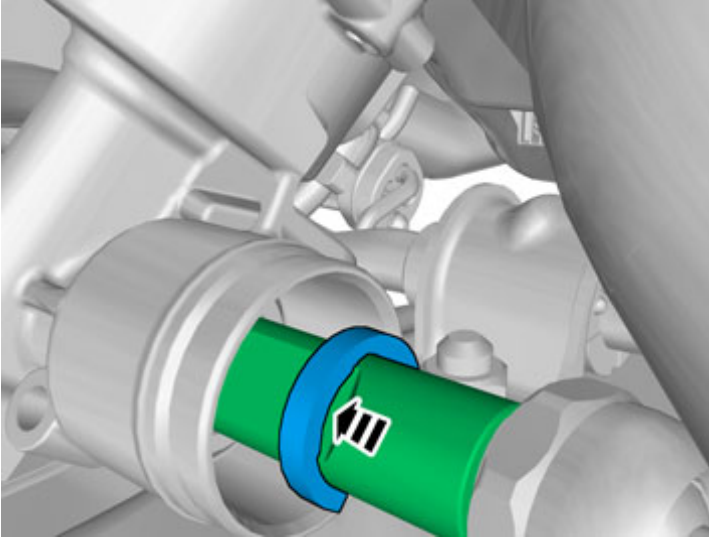
IMG-383063



Installation instructions, accessories

Volvo Car Corporation Gothenburg, Sweden

7

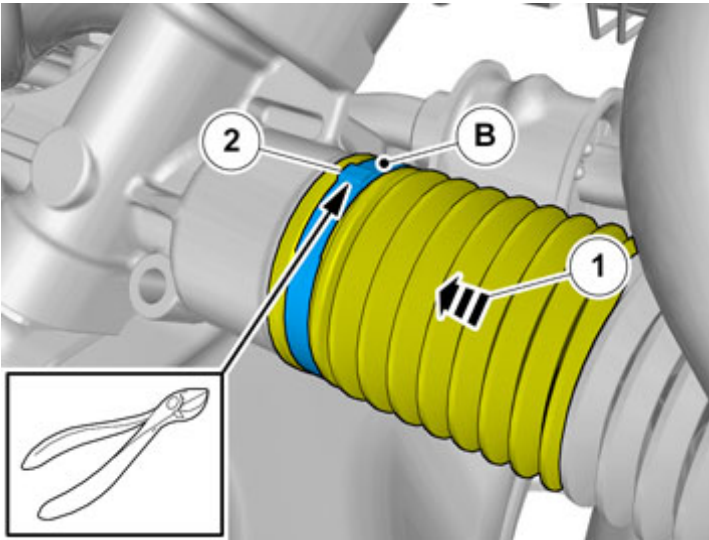


IMG-383064

Install component that comes with the accessory kit.

Installation

8



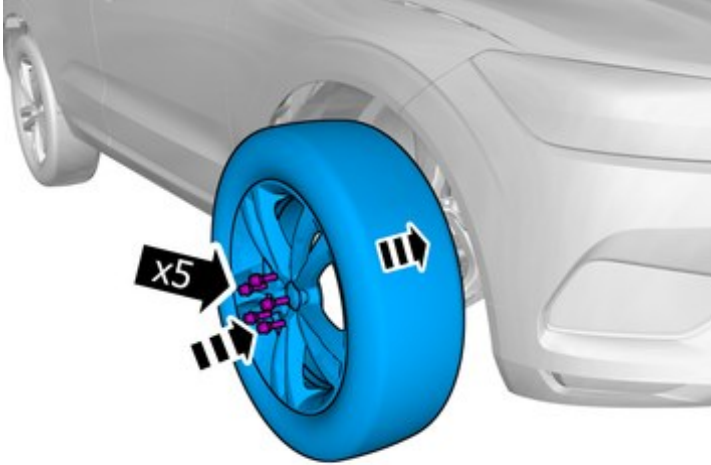
IMG-383065



Installation instructions, accessories

Volvo Car Corporation Gothenburg, Sweden

9



Tightening torque: Wheel to wheel hub
Stage 1: 20 Nm
Stage 2: 140 Nm

IMG-401659

10

Repeat all method steps for the other side.

IMG-377070