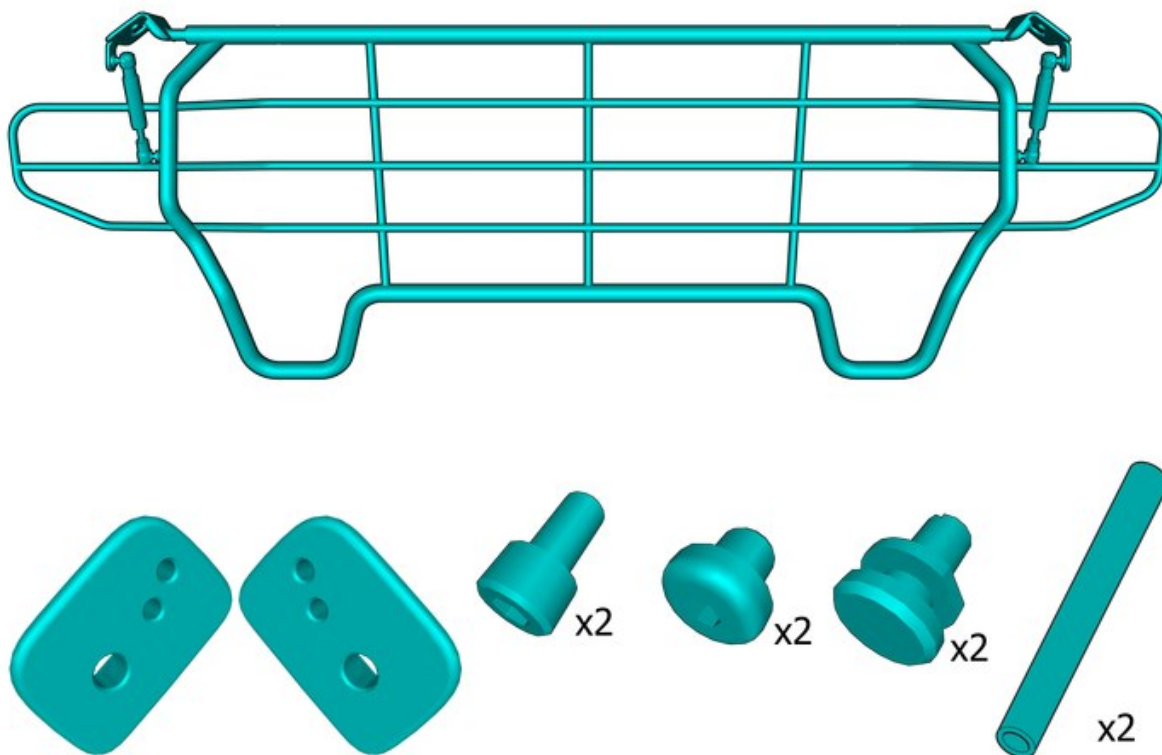


# Installation instructions, accessories

Volvo Car Corporation Gothenburg, Sweden

Instruction No	Version	Part. No.
31659274	1.1	32204264

## Protective grille, steel



IMG-448779

# Installation instructions, accessories

Volvo Car Corporation Gothenburg, Sweden

---

## Information

---

1

Read through all of the instructions before starting installation.

Notifications and warning texts are for your safety and to minimise the risk of something breaking during installation.

Ensure that all tools stated in the instructions are available before starting installation.

Certain steps in the instructions are only presented in the form of images. Explanatory text is also given for more complicated steps.

In the event of any problems with the instructions or the accessory, contact your local Volvo dealer.

---

## Further information

---

2



IMG-400004

### **Warning!**

The front mounting must not be used when installing load compartment grille. Use rear mounting!

### **Caution!**

Be extra careful when removing or installing this component.

### **Caution!**

Make sure not to damage painted surfaces.

The work may only be performed by trained personnel and at an approved location for this type of work.

---

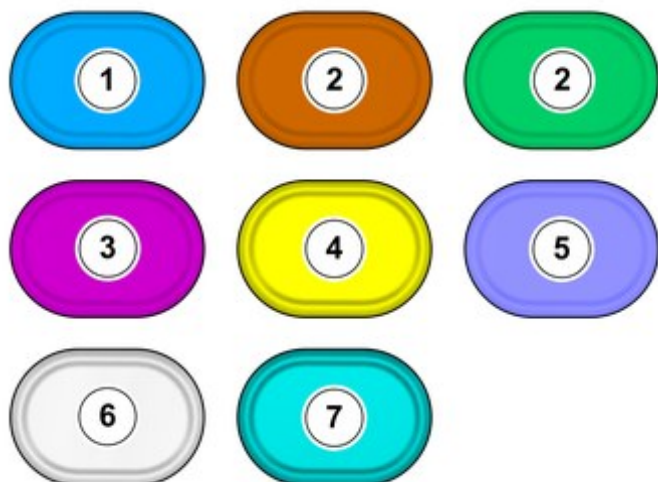
## Color symbols

---

# Installation instructions, accessories

Volvo Car Corporation Gothenburg, Sweden

3



IMG-400010

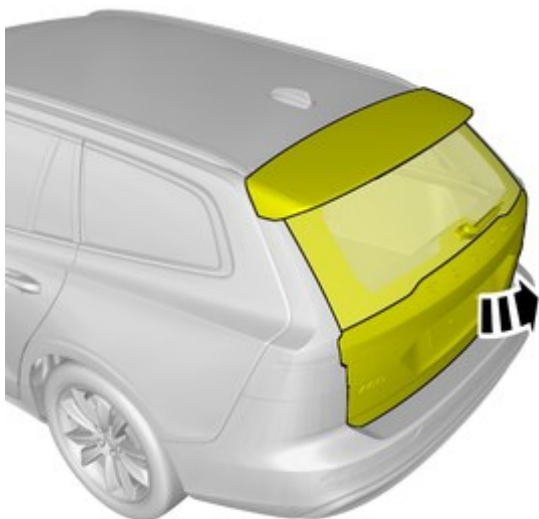
## Note!

This colour chart displays (in colour print and electronic version) the importance of the different colours used in the images of the method steps.

1. Used for focused component, the component with which you will do something.
2. Used as extra colors when you need to show or differentiate additional parts.
3. Used for attachments that are to be removed/installed. May be screws, clips, connectors, etc.
4. Used when the component is not fully removed from the vehicle but only hung to the side.
5. Used for standard tools and special tools.
6. Used as background color for vehicle components.
7. Used for accessory components.

## Removal

4

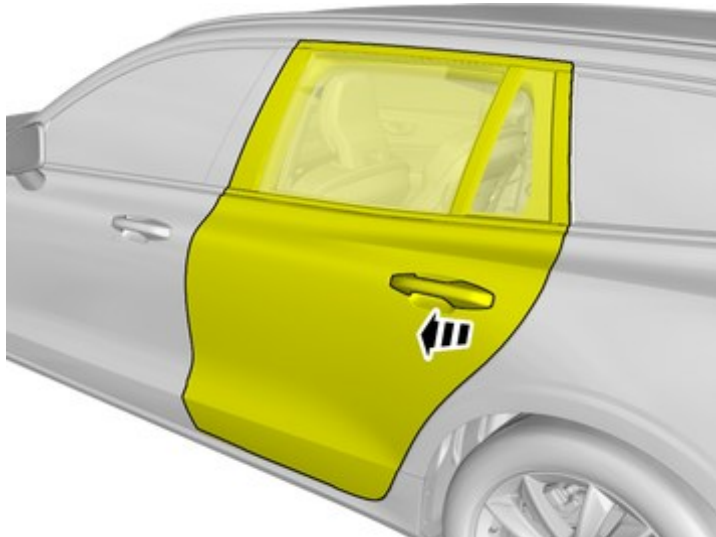


IMG-448570

# Installation instructions, accessories

Volvo Car Corporation Gothenburg, Sweden

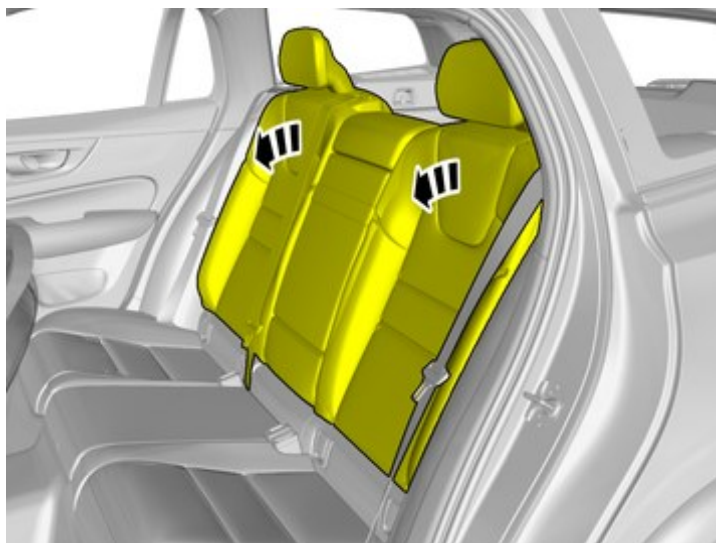
5



IMG-448579

Repeat on the other side.

6



IMG-448578

# Installation instructions, accessories

Volvo Car Corporation Gothenburg, Sweden

7



IMG-448580

Remove the marked part.

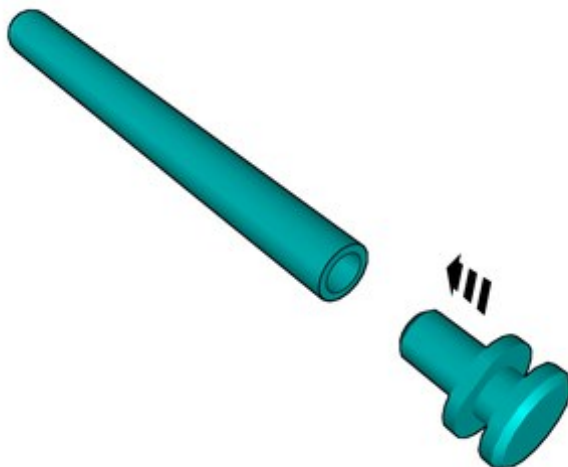
Component is to be stored in a suitable place in the car.

**Use:** Interior trim remover

Repeat on the other side.

## Accessory installation

8



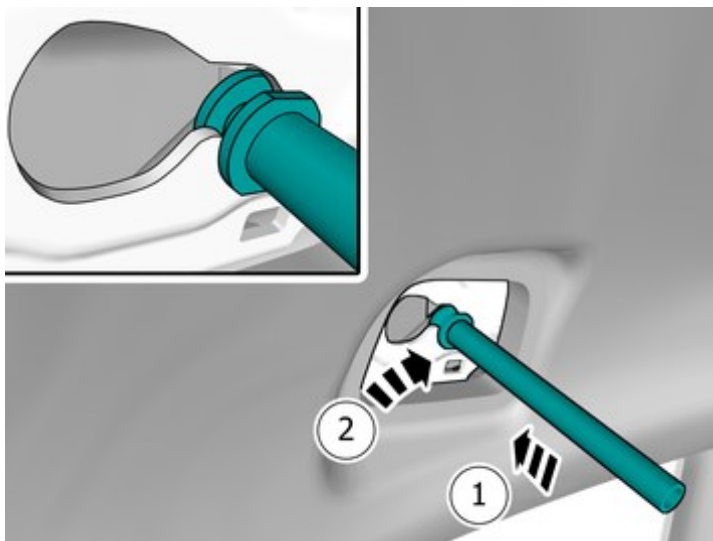
IMG-448767

Assemble components that come with the accessory kit.

# Installation instructions, accessories

Volvo Car Corporation Gothenburg, Sweden

9

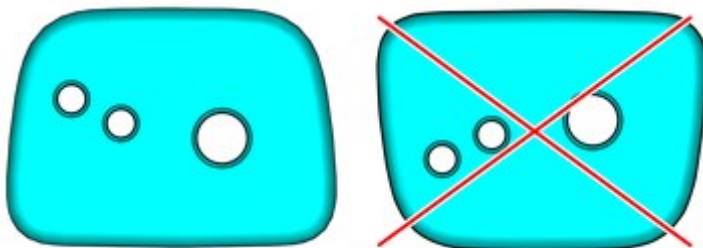


IMG-448780

Place the component where indicated in the graphic.

10

Use detail according to image.



IMG-448799

# Installation instructions, accessories

Volvo Car Corporation Gothenburg, Sweden

11



IMG-448776

Install component that comes with the accessory kit.

12



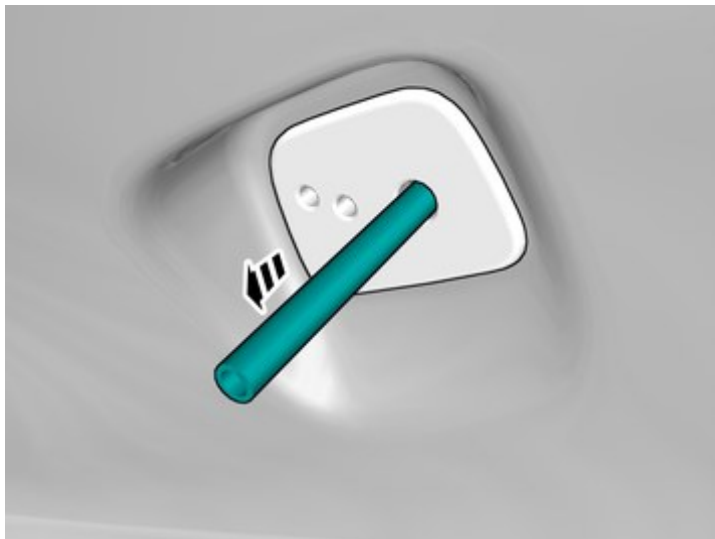
IMG-448784

Turn marked detail while pushing the mounting to make the detail fit the mounting outlet

# Installation instructions, accessories

Volvo Car Corporation Gothenburg, Sweden

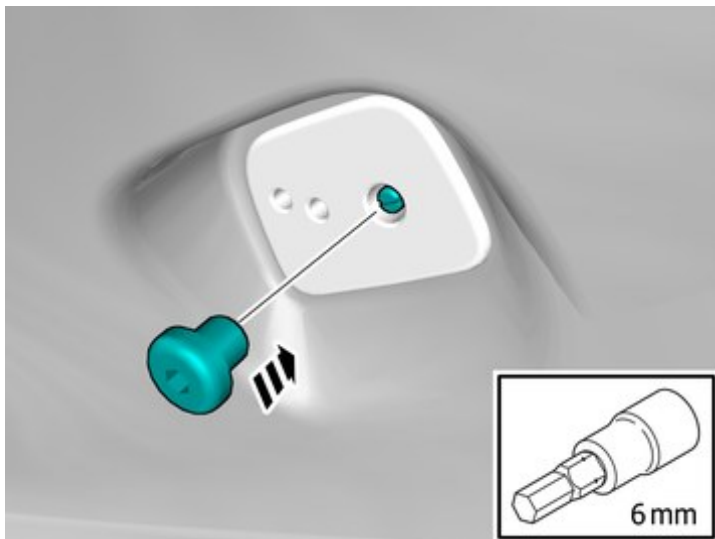
13



IMG-448777

Remove the marked part.

14



IMG-448778

Install component that comes with the accessory kit.

Use hands only.

15

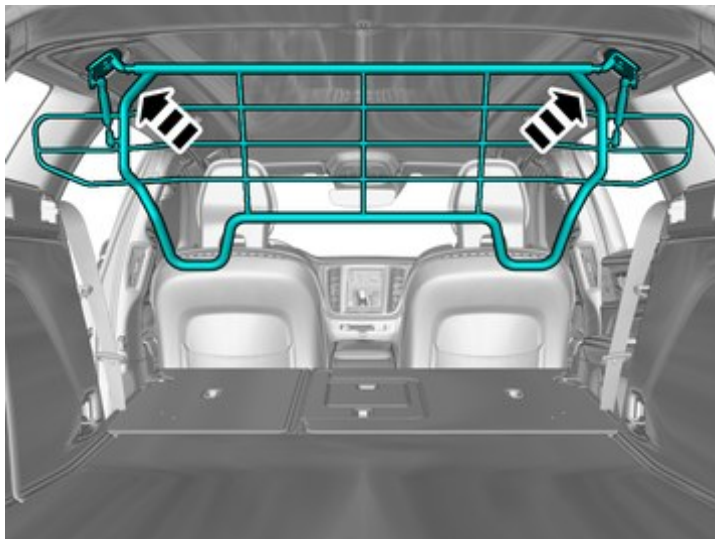
Repeat the steps when installing accessories on opposite side.



# Installation instructions, accessories

Volvo Car Corporation Gothenburg, Sweden

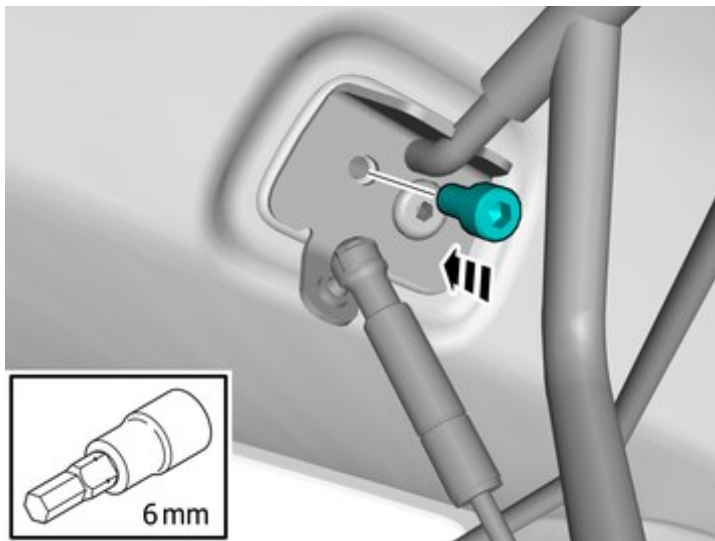
16



IMG-448781

Install component that comes with the accessory kit.

17



IMG-448782

Install component that comes with the accessory kit.

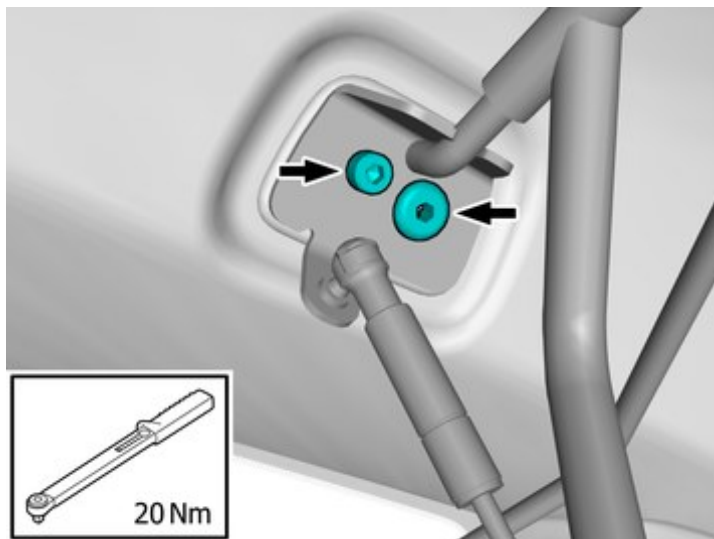
Use hands only.

Repeat on the other side.

# Installation instructions, accessories

Volvo Car Corporation Gothenburg, Sweden

18



IMG-448783

Tighten the bolts.

Repeat on the other side.