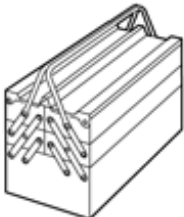



Installation instructions, accessories

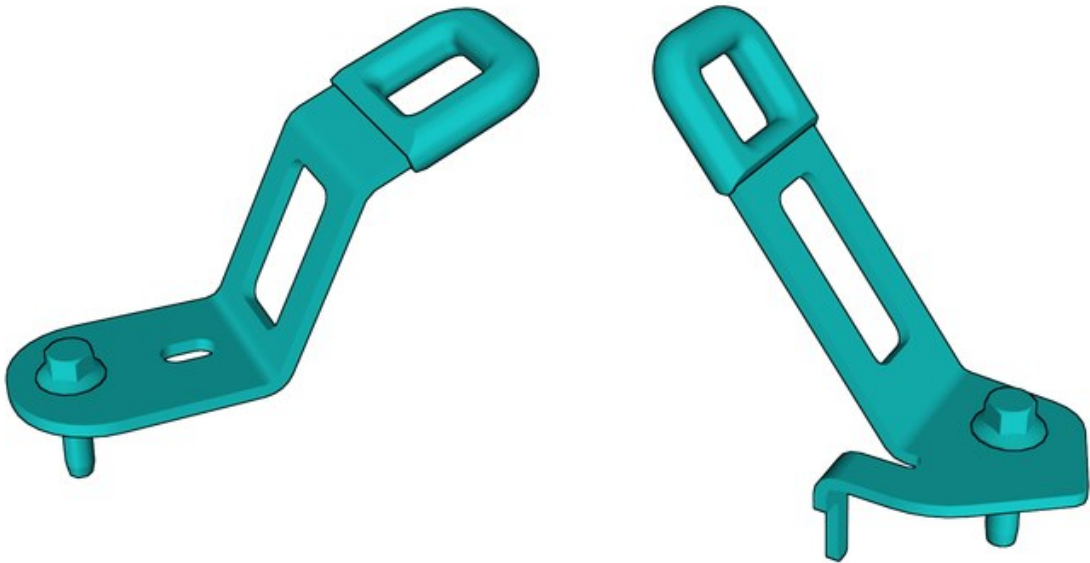
Volvo Car Corporation Gothenburg, Sweden

Instruction No	Version	Part. No.
31414626	1.2	31379261, 31470889

Child seat, mounting eyelets

Equipment	
 IMG-345497	 IMG-239664

Nm
lbf.ft



IMG-450377

Installation instructions, accessories

Volvo Car Corporation Gothenburg, Sweden

Information

1

Read through all of the instructions before starting installation.

Notifications and warning texts are for your safety and to minimise the risk of something breaking during installation.

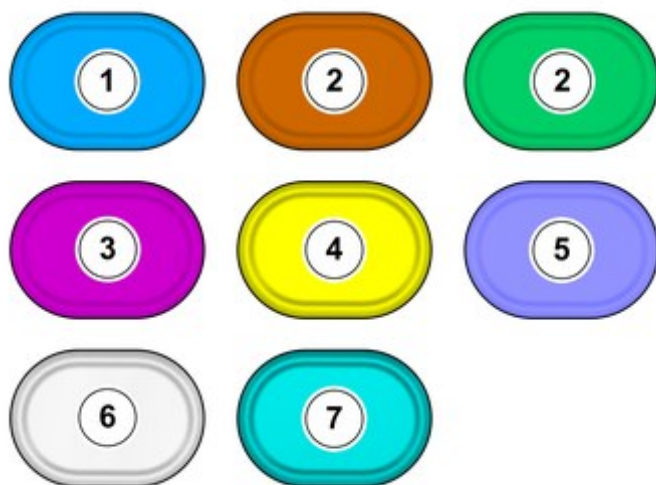
Ensure that all tools stated in the instructions are available before starting installation.

Certain steps in the instructions are only presented in the form of images. Explanatory text is also given for more complicated steps.

In the event of any problems with the instructions or the accessory, contact your local Volvo dealer.

Color symbols

2



IMG-400010

Note!

This colour chart displays (in colour print and electronic version) the importance of the different colours used in the images of the method steps.

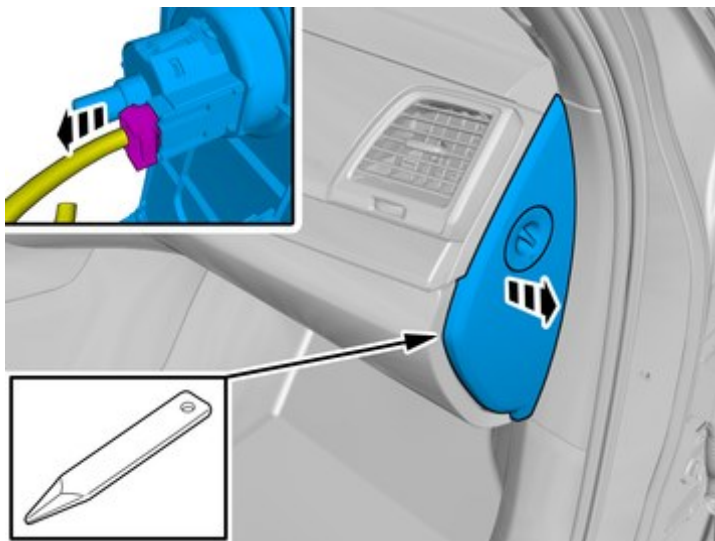
1. Used for focused component, the component with which you will do something.
2. Used as extra colors when you need to show or differentiate additional parts.
3. Used for attachments that are to be removed/installed. May be screws, clips, connectors, etc.
4. Used when the component is not fully removed from the vehicle but only hung to the side.
5. Used for standard tools and special tools.
6. Used as background color for vehicle components.
7. Used for accessory components.

Removal

Installation instructions, accessories

Volvo Car Corporation Gothenburg, Sweden

3

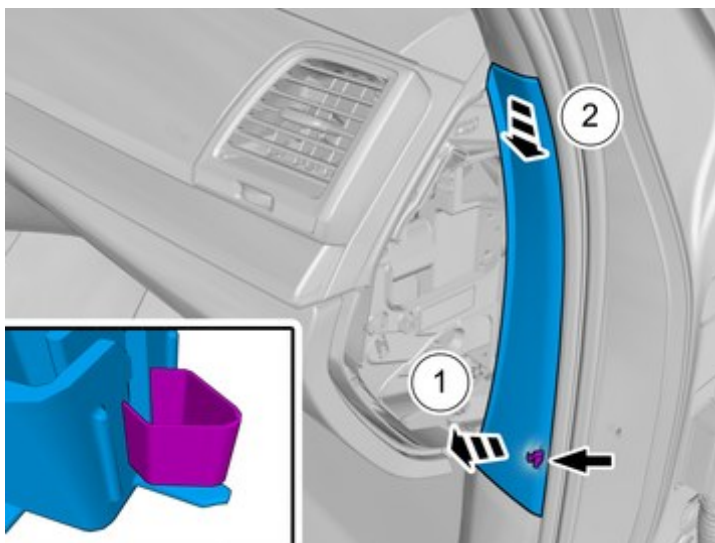


IMG-390109

Remove the panel.

Disconnect the connector, if applicable.

4



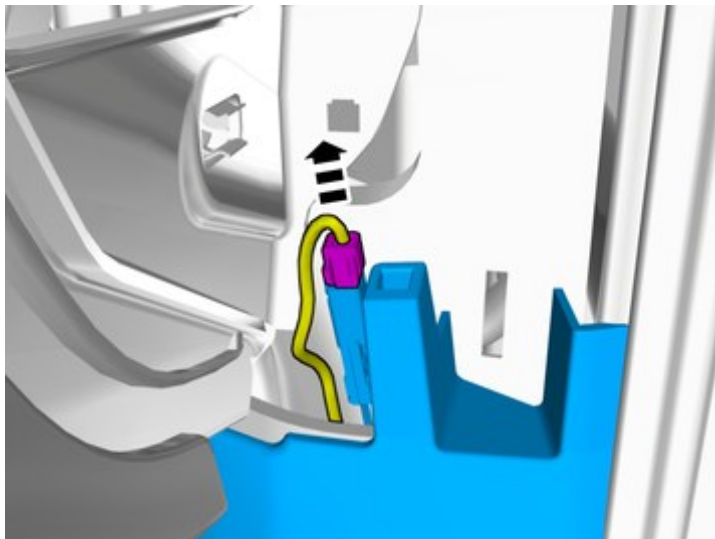
IMG-390116

Remove the panel.

Installation instructions, accessories

Volvo Car Corporation Gothenburg, Sweden

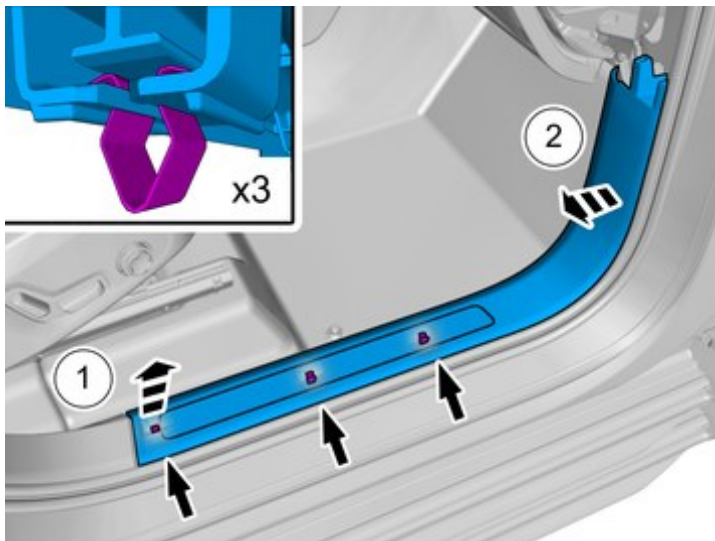
5



IMG-390091

Disconnect the connector, if applicable.

6



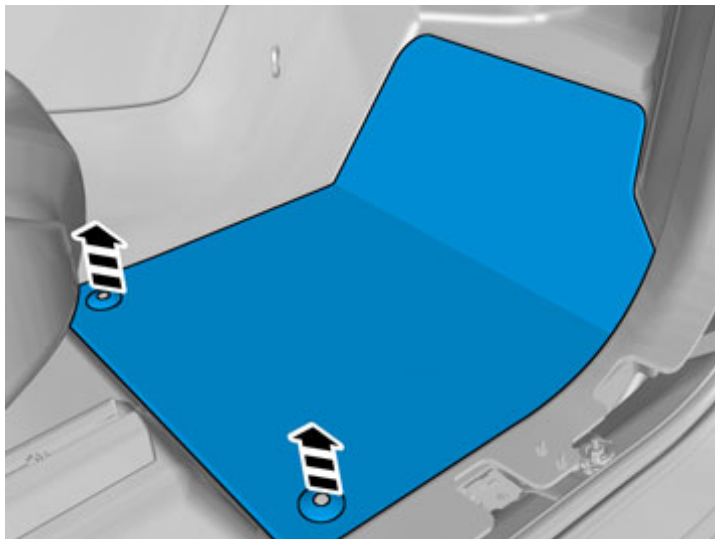
IMG-390106

Remove the panel.

Installation instructions, accessories

Volvo Car Corporation Gothenburg, Sweden

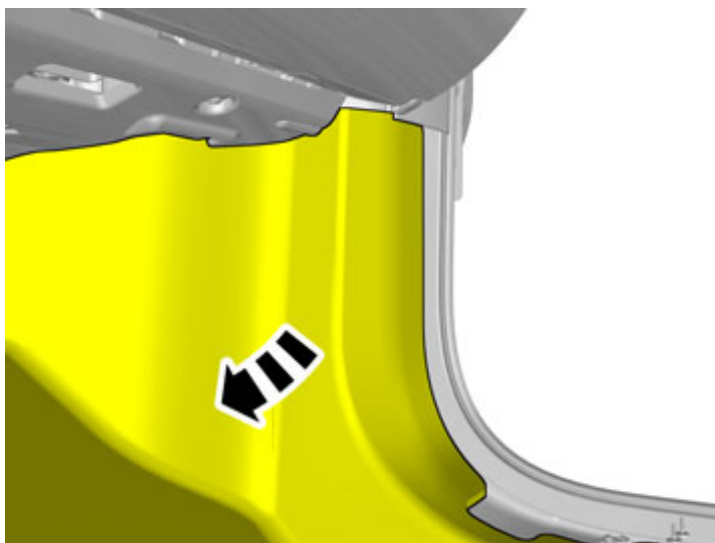
7



IMG-382293

Remove the marked part.

8



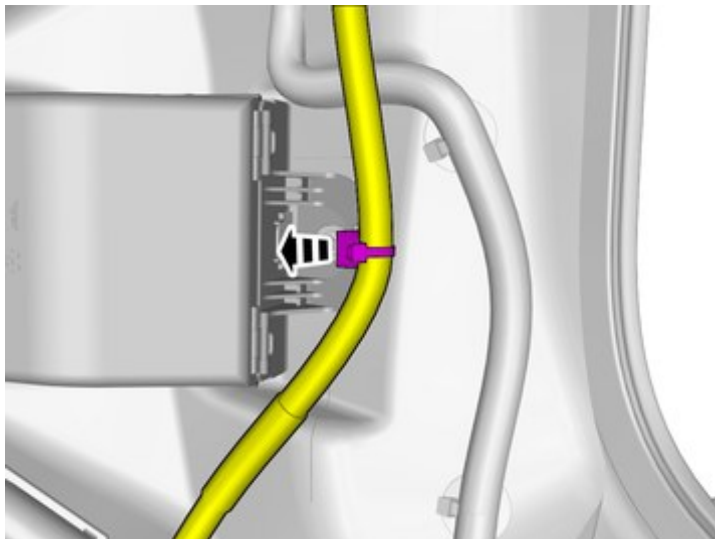
IMG-382294

Fold the carpet aside.

Installation instructions, accessories

Volvo Car Corporation Gothenburg, Sweden

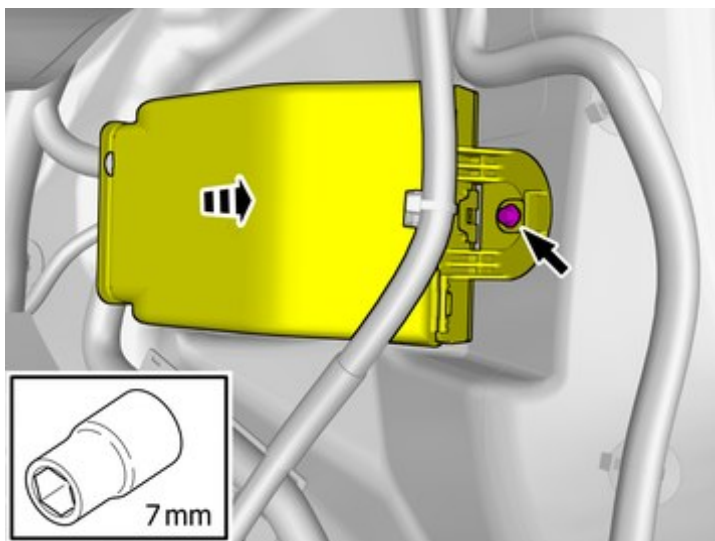
9



IMG-455456

Remove the cable harness clips.

10



IMG-455457

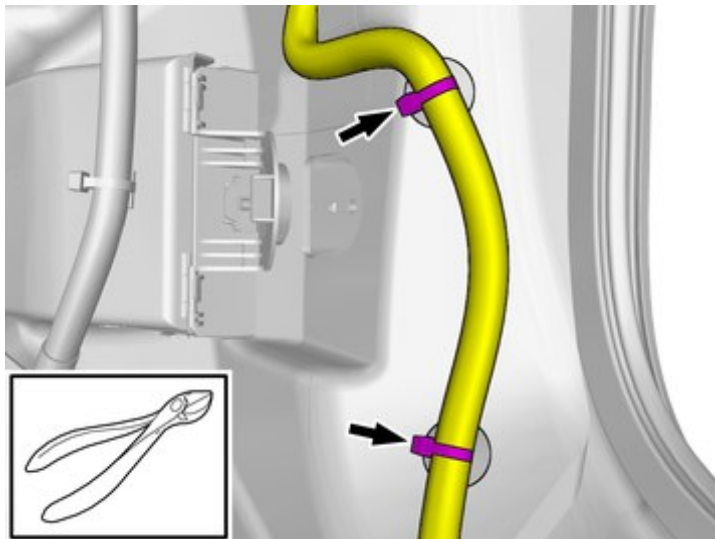
Remove the screw.

Loosen the component indicated. Do not remove it.

Installation instructions, accessories

Volvo Car Corporation Gothenburg, Sweden

11

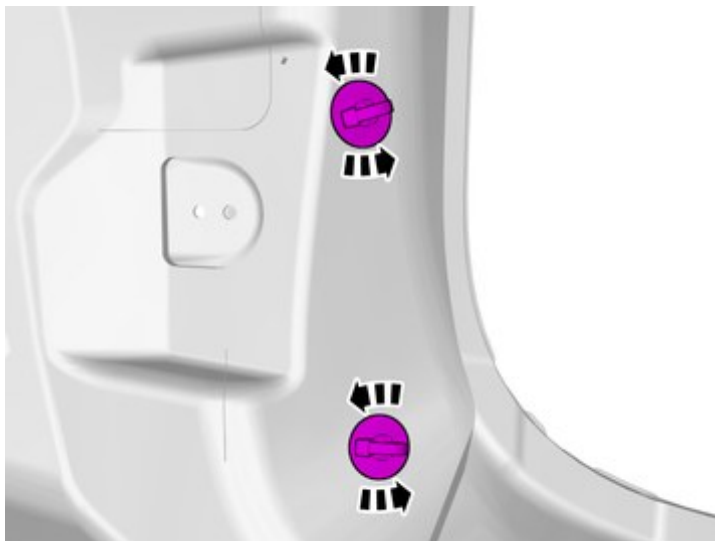


IMG-455461

Remove the cable tie(s).

Loosen the wiring harness or move it to the side.

12



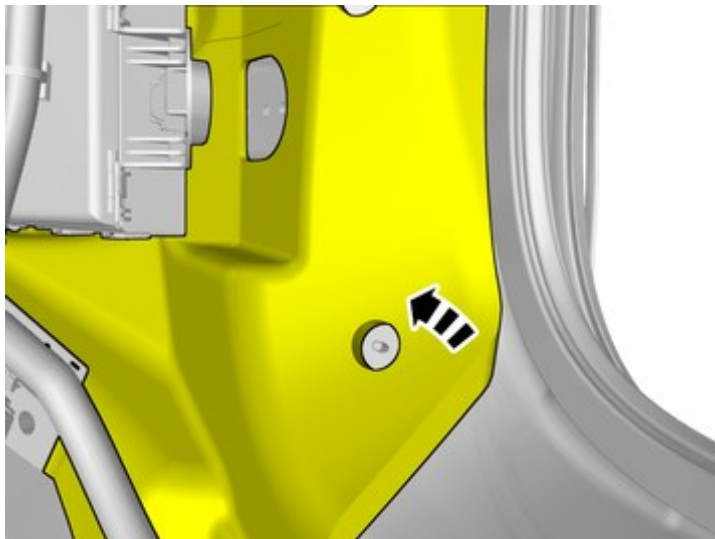
IMG-386330

Remove the clips.

Installation instructions, accessories

Volvo Car Corporation Gothenburg, Sweden

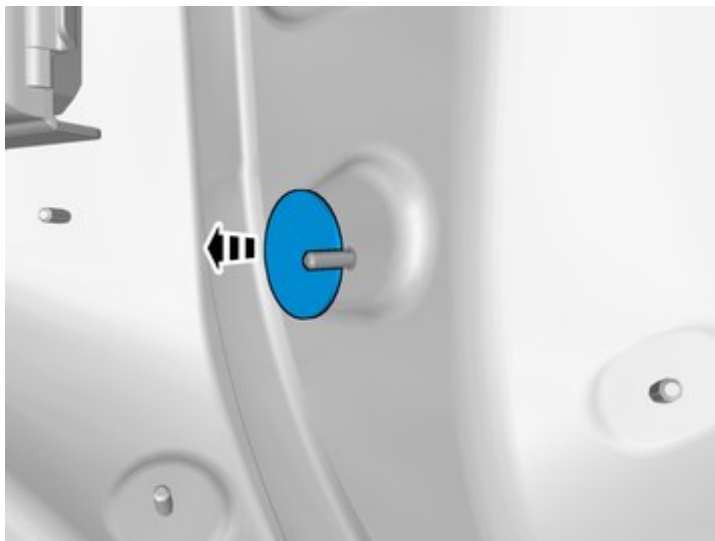
13



IMG-455462

Fold the insulation aside.

14



IMG-455463

If the vehicle has a sealing plate, it should be removed.

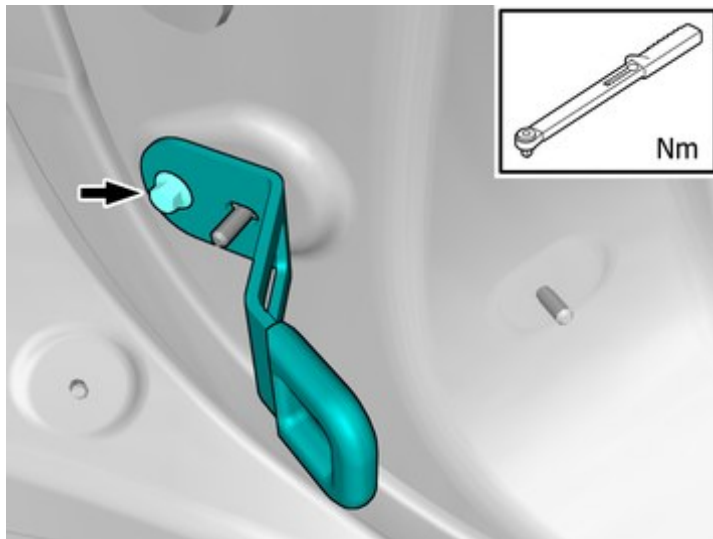
Remove any traces of glue.

Accessory installation

Installation instructions, accessories

Volvo Car Corporation Gothenburg, Sweden

15



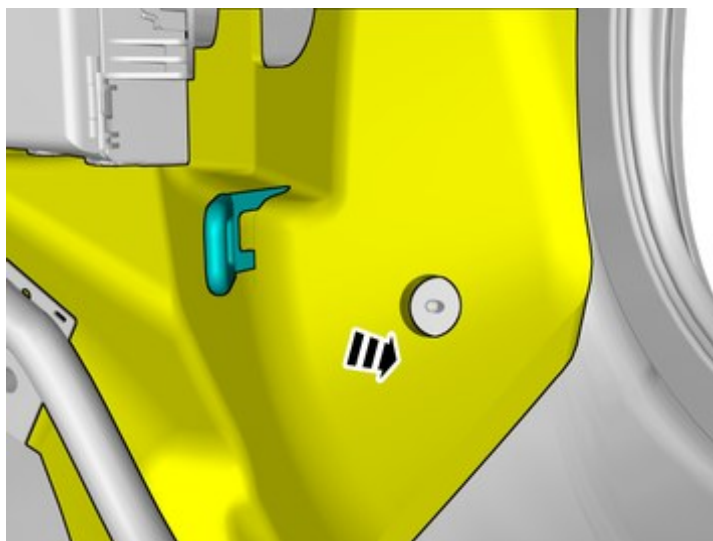
IMG-455464

Install component that comes with the accessory kit.

Tighten the screw.

Tightening torque: Child seat mounting eyelet, outer , 7 Nm

16



IMG-455466

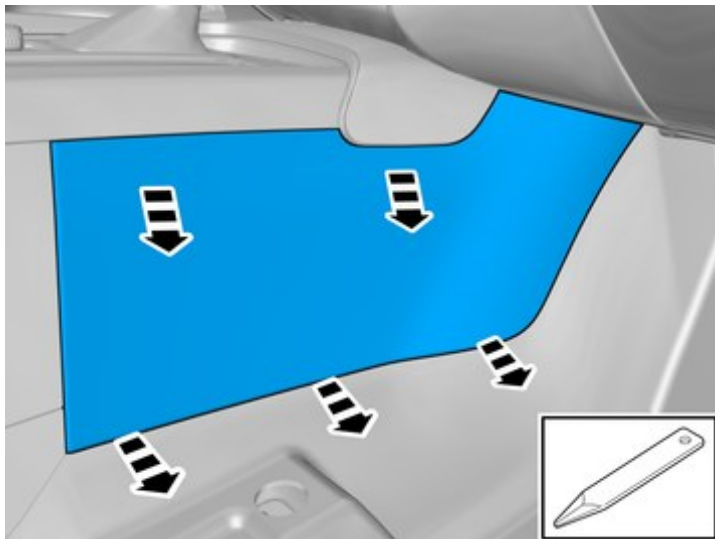
Refit the insulation.

Removal

Installation instructions, accessories

Volvo Car Corporation Gothenburg, Sweden

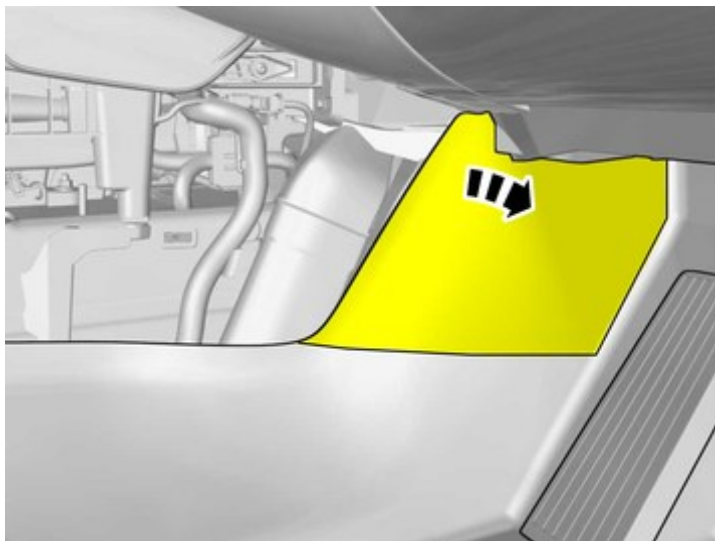
17



IMG-386432

Remove the panel.

18



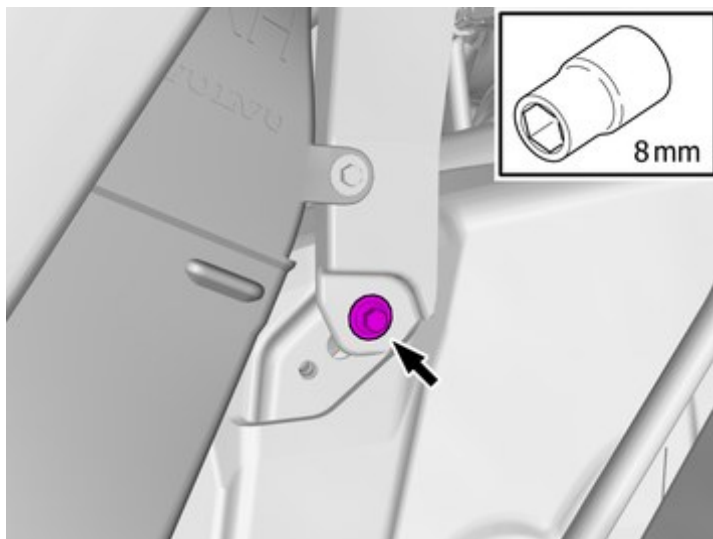
IMG-382360

Fold the carpet aside.

Installation instructions, accessories

Volvo Car Corporation Gothenburg, Sweden

19



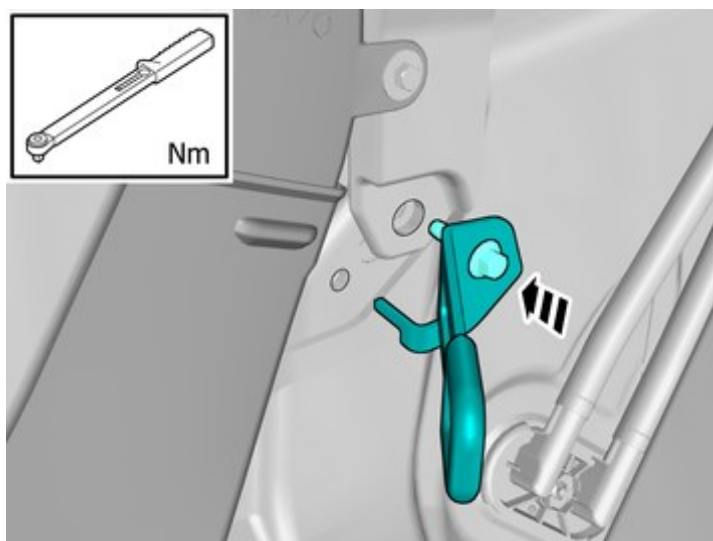
IMG-455563

Remove the screw.

The item is not to be reused.

Accessory installation

20



IMG-455572

Install component that comes with the accessory kit.

Tighten the screw.

Tightening torque: Child seat mounting eyelet, inner , 13 Nm

Installation

21

Reinstall the removed parts in reverse order.