

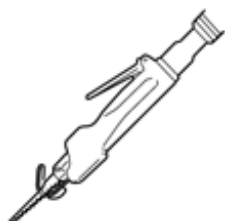
Installation instructions, accessories

Volvo Car Corporation Gothenburg, Sweden

Instruction No	Version	Part. No.
31408976	1.2	31408975, 31408974

End pipes, double

Equipment

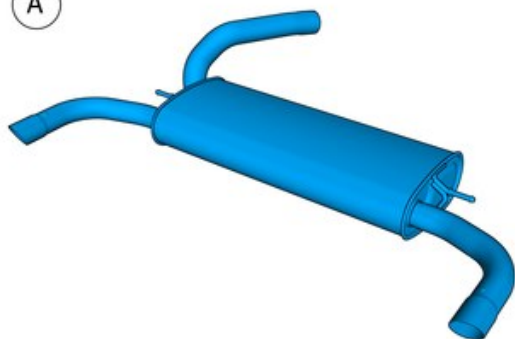


IMG-240693



IMG-400025

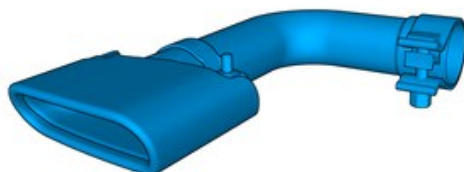
A



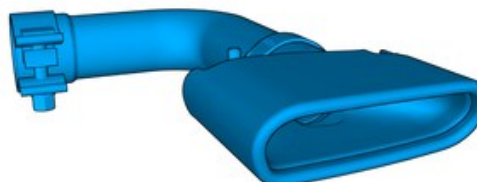
B



C



D



IMG-406981

Installation instructions, accessories

Volvo Car Corporation Gothenburg, Sweden

Information

- 1
- Read through all of the instructions before starting installation.

Notifications and warning texts are for your safety and to minimise the risk of something breaking during installation.

Ensure that all tools stated in the instructions are available before starting installation.

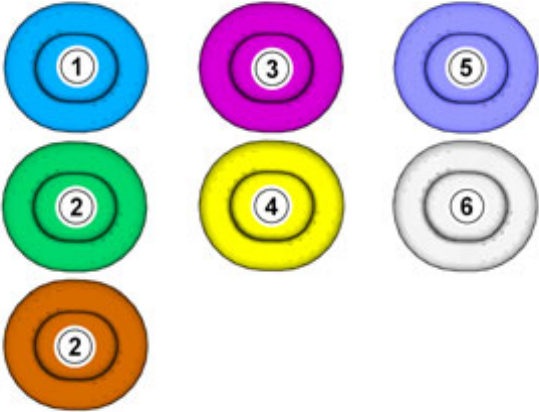
Certain steps in the instructions are only presented in the form of images. Explanatory text is also given for more complicated steps.

In the event of any problems with the instructions or the accessory, contact your local Volvo dealer.

Conditions

- 2
- Note!**
The Diffuser (accessory) must be installed on the vehicle.

Color symbols

- 3
- 
1. Used for focused component, the component with which you will do something.

2. Used as extra colors when you need to show or differentiate additional parts.

3. Used for attachments that are to be removed/installed. May be screws, clips, connectors, etc.

4. Used when the component is not fully removed from the vehicle but only hung to the side.

5. Used for standard tools and special tools.

6. Used as background color for vehicle components.

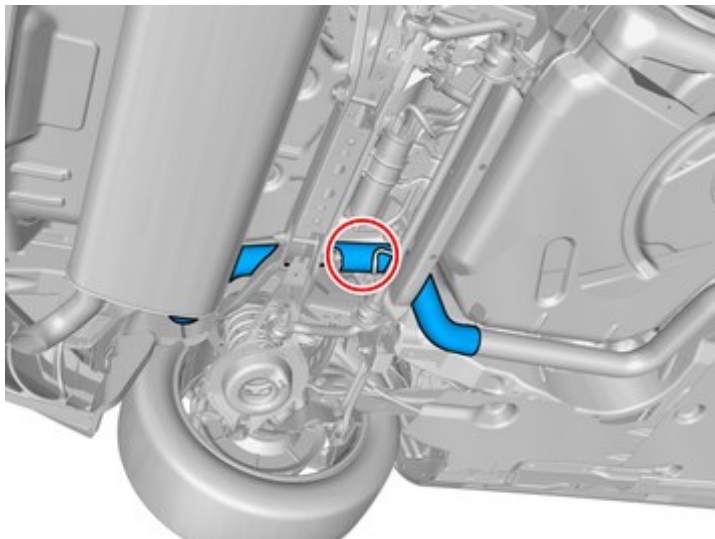
IMG-363036

Removal

Installation instructions, accessories

Volvo Car Corporation Gothenburg, Sweden

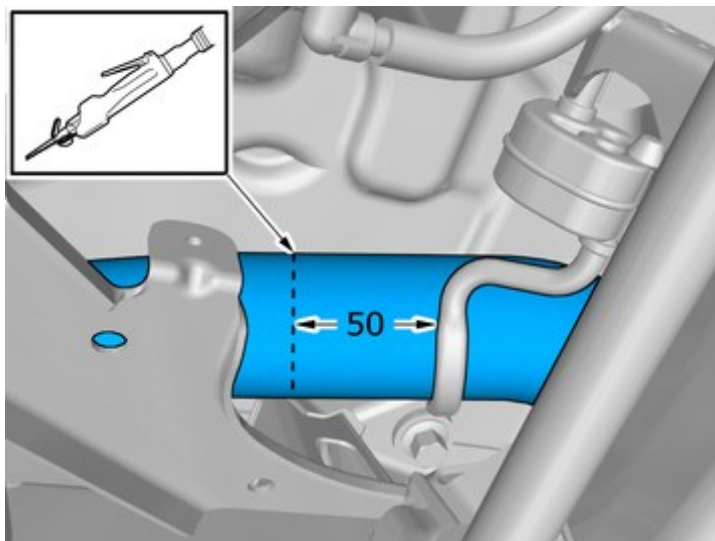
4



IMG-406830

Note!
Orientation view

5



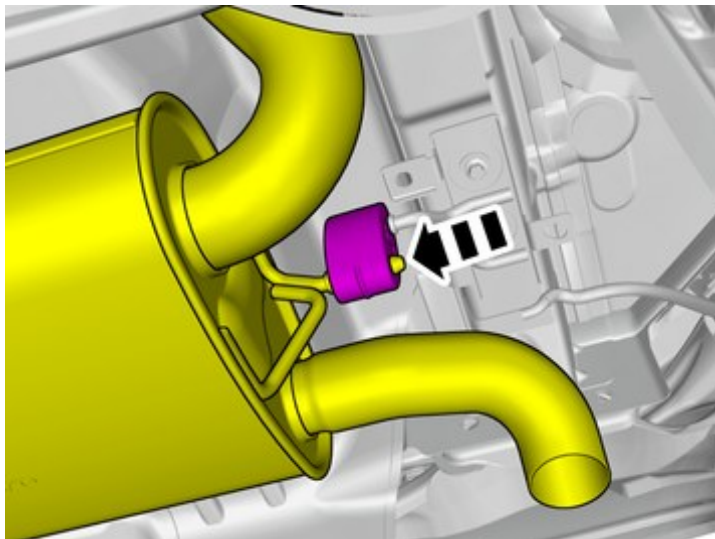
IMG-406831

Use: Air-powered air saw

Installation instructions, accessories

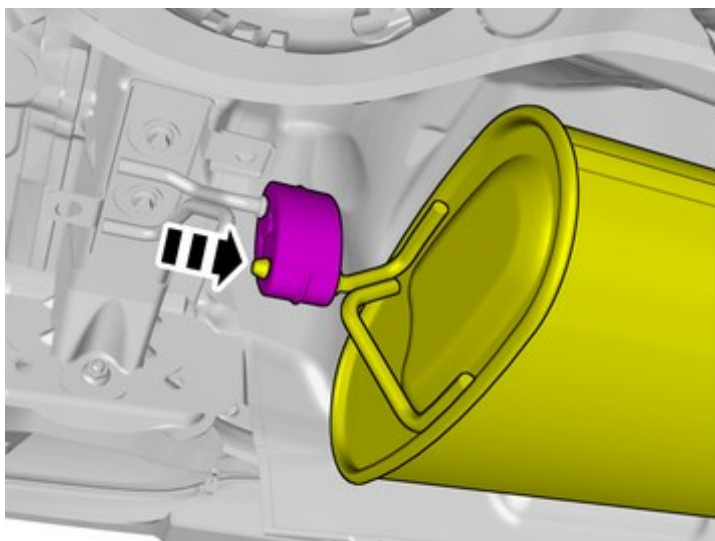
Volvo Car Corporation Gothenburg, Sweden

6



IMG-406860

7



IMG-406861

Installation instructions, accessories

Volvo Car Corporation Gothenburg, Sweden

8



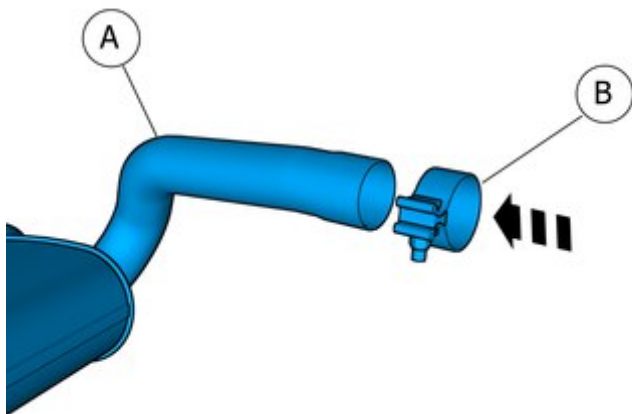
Remove the marked part.

IMG-406864

Accessory installation

9

Install component that comes with the accessory kit.

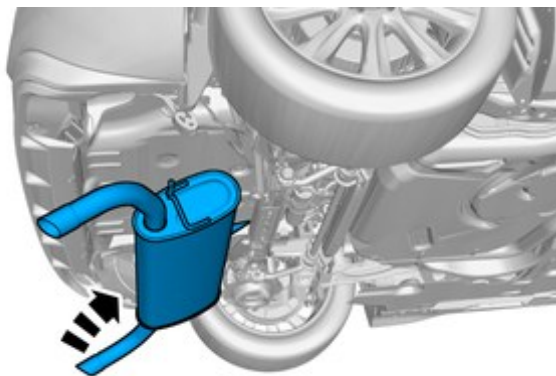


IMG-406880

Installation instructions, accessories

Volvo Car Corporation Gothenburg, Sweden

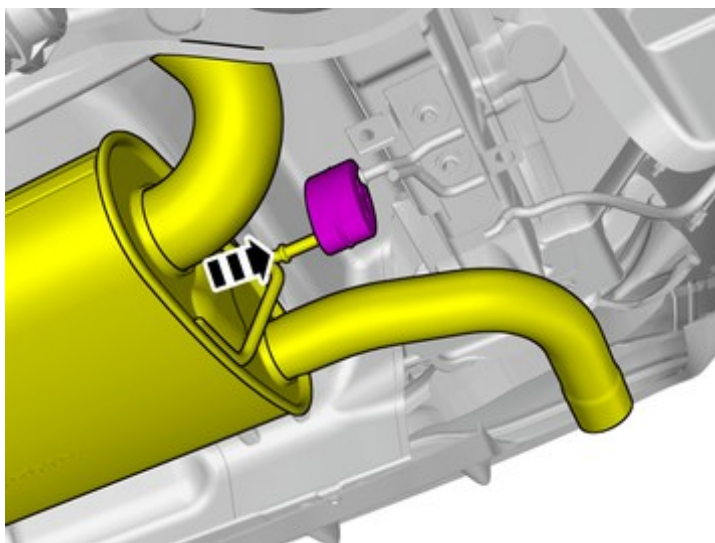
10



Install component that comes with the accessory kit.

IMG-406881

11

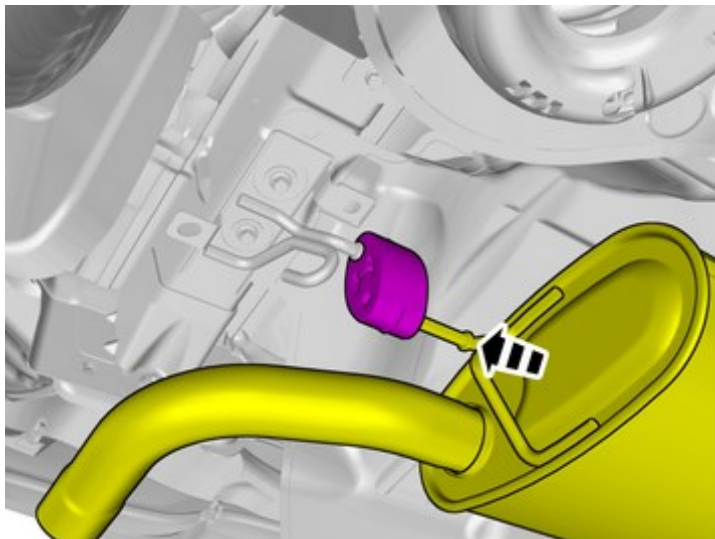


IMG-406920

Installation instructions, accessories

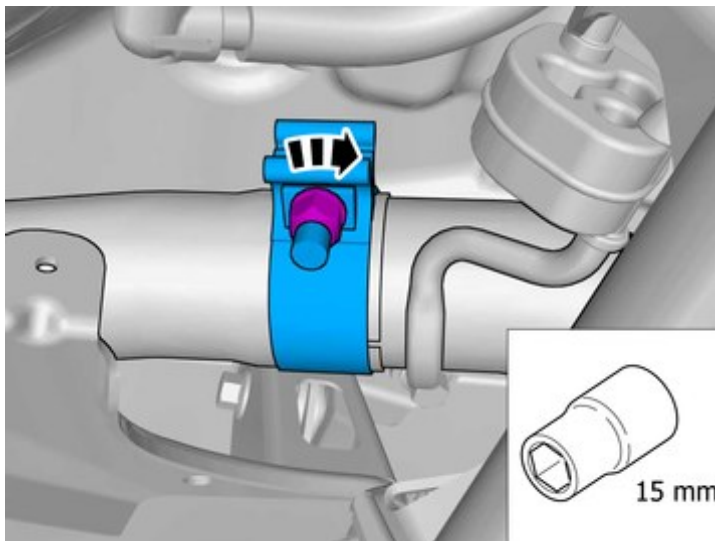
Volvo Car Corporation Gothenburg, Sweden

12



IMG-406921

13



IMG-406915

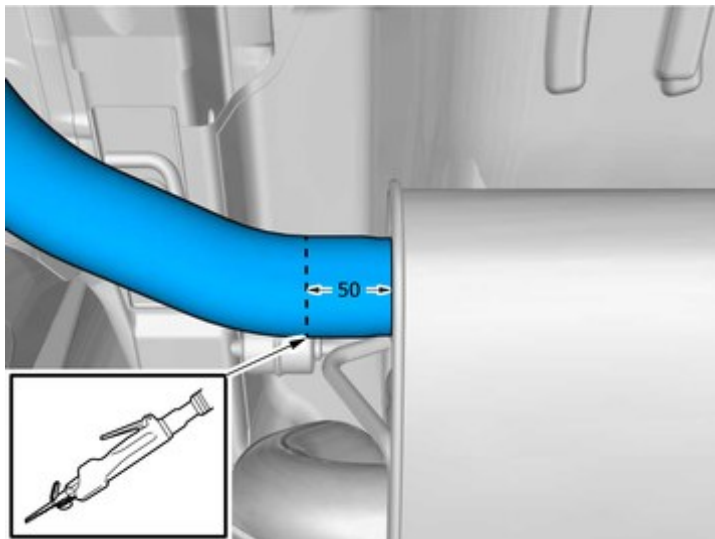
Tighten the nut.

Removal

Installation instructions, accessories

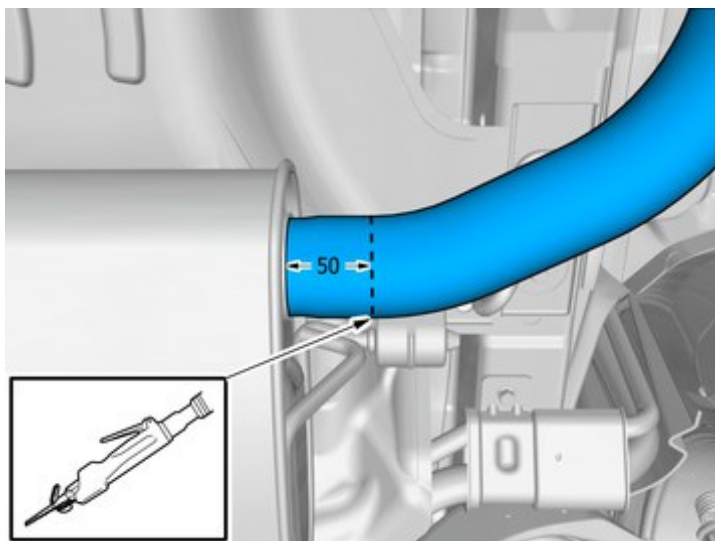
Volvo Car Corporation Gothenburg, Sweden

14



Use: Air-powered air saw

15



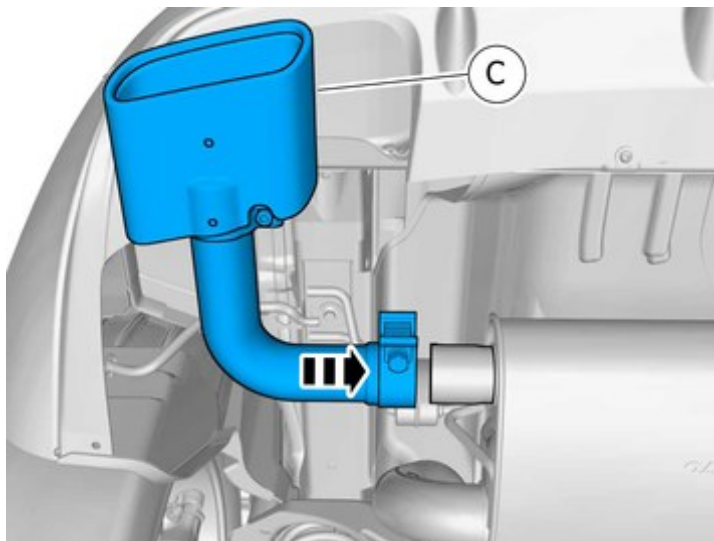
Use: Air-powered air saw

Accessory installation

Installation instructions, accessories

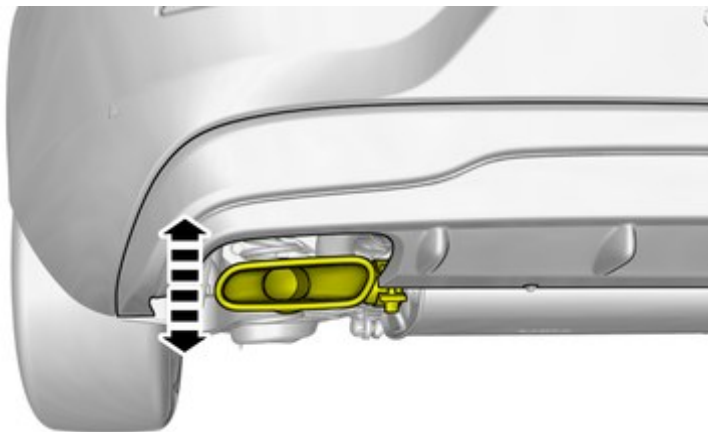
Volvo Car Corporation Gothenburg, Sweden

16



IMG-406950

17

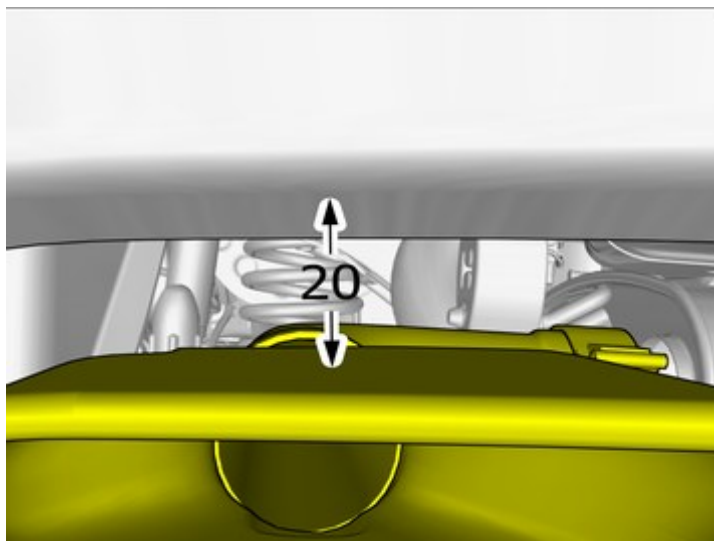


IMG-406973

Installation instructions, accessories

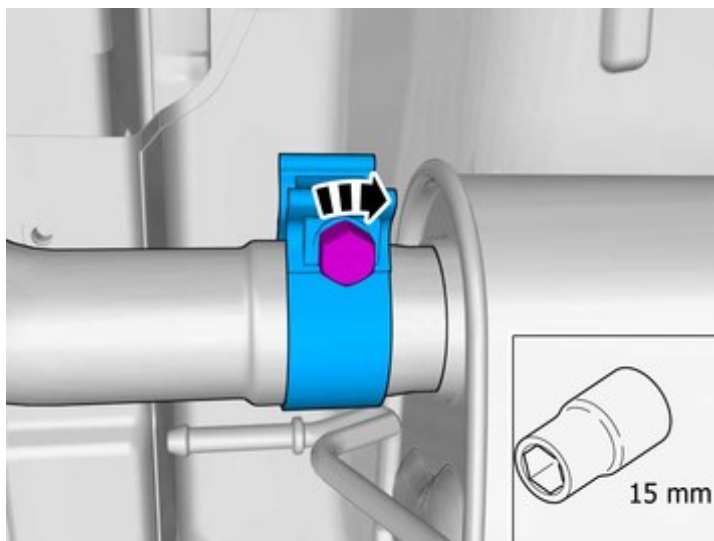
Volvo Car Corporation Gothenburg, Sweden

18



IMG-406974

19

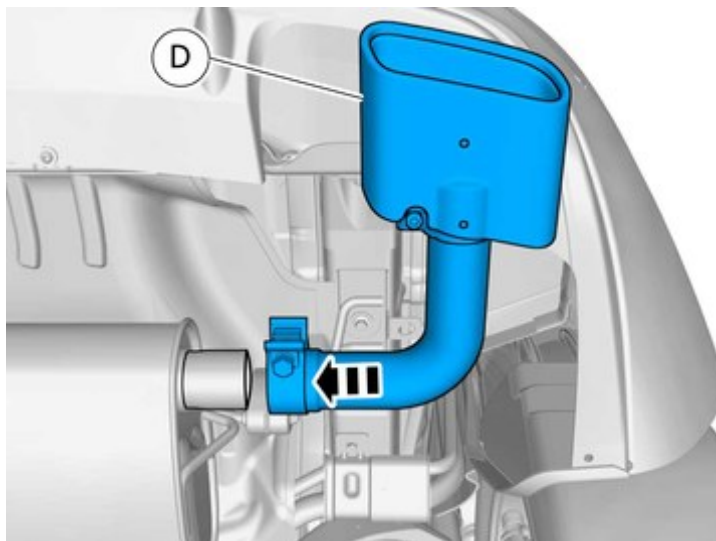


IMG-406967

Installation instructions, accessories

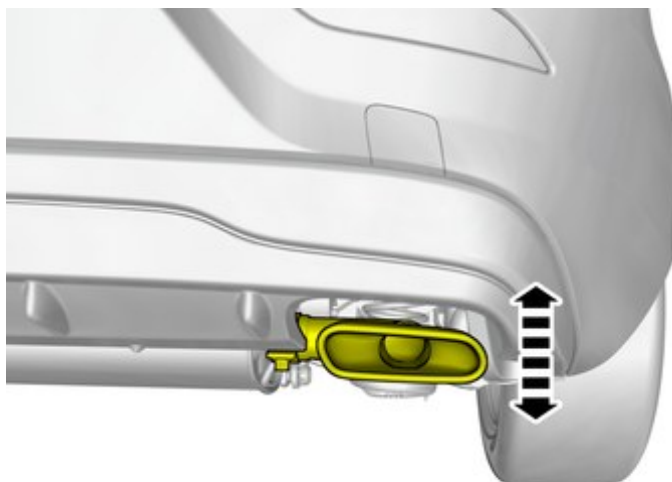
Volvo Car Corporation Gothenburg, Sweden

20



IMG-406966

21

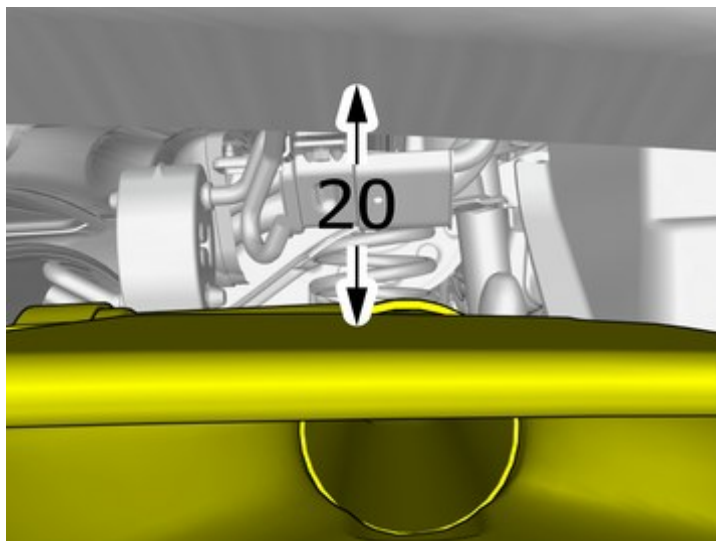


IMG-406976

Installation instructions, accessories

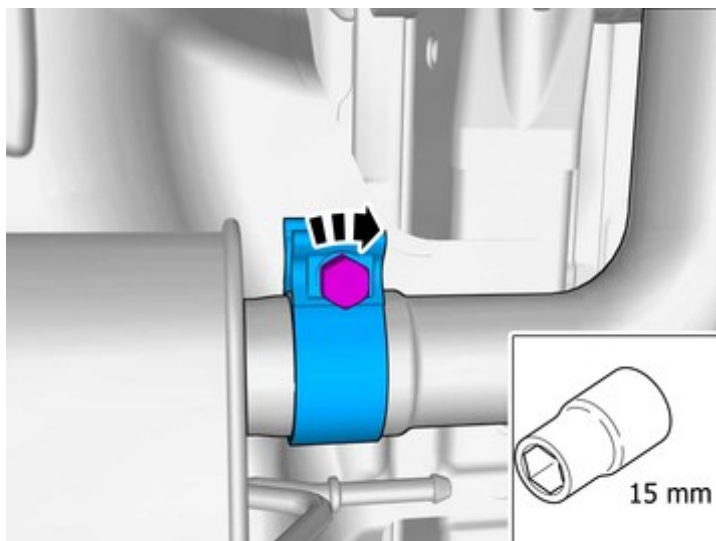
Volvo Car Corporation Gothenburg, Sweden

22



IMG-406977

23



IMG-406968