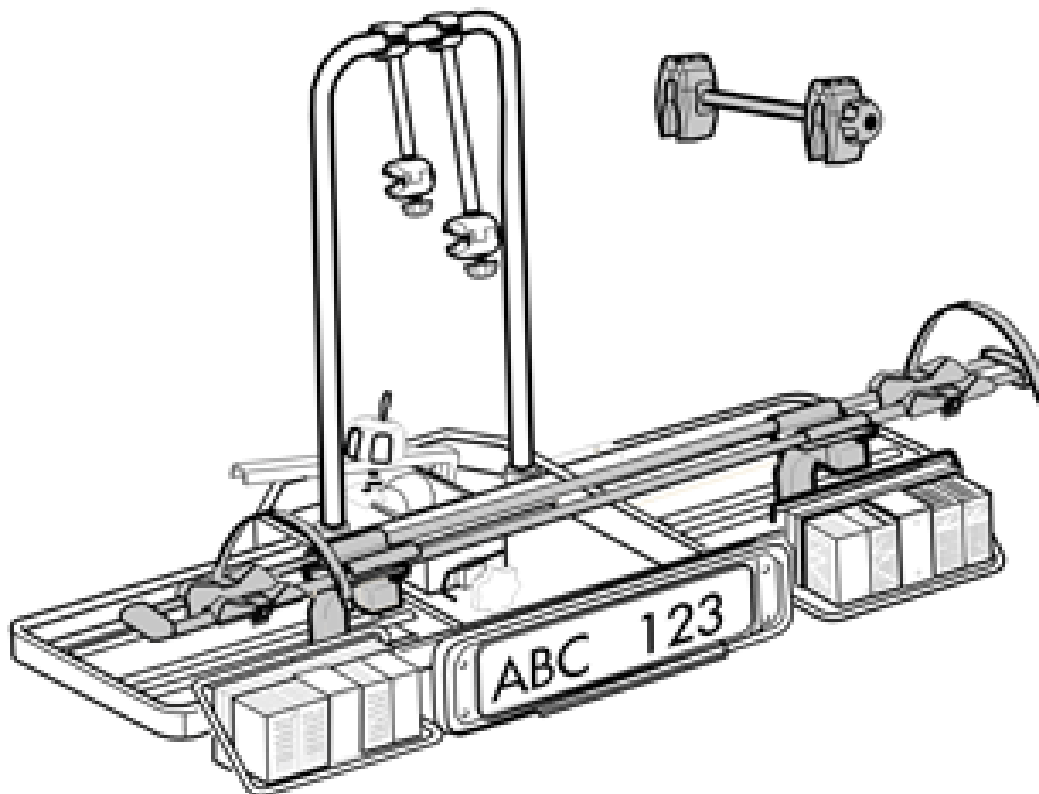


Installation instructions, accessories

Volvo Car Corporation Gothenburg, Sweden

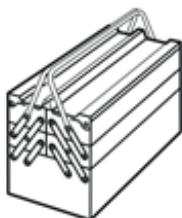
Instruction No 8622941
Version 1.0
Part. No.

Bicycle holder for extra bicycle, mounted on the tow bar



R8903313

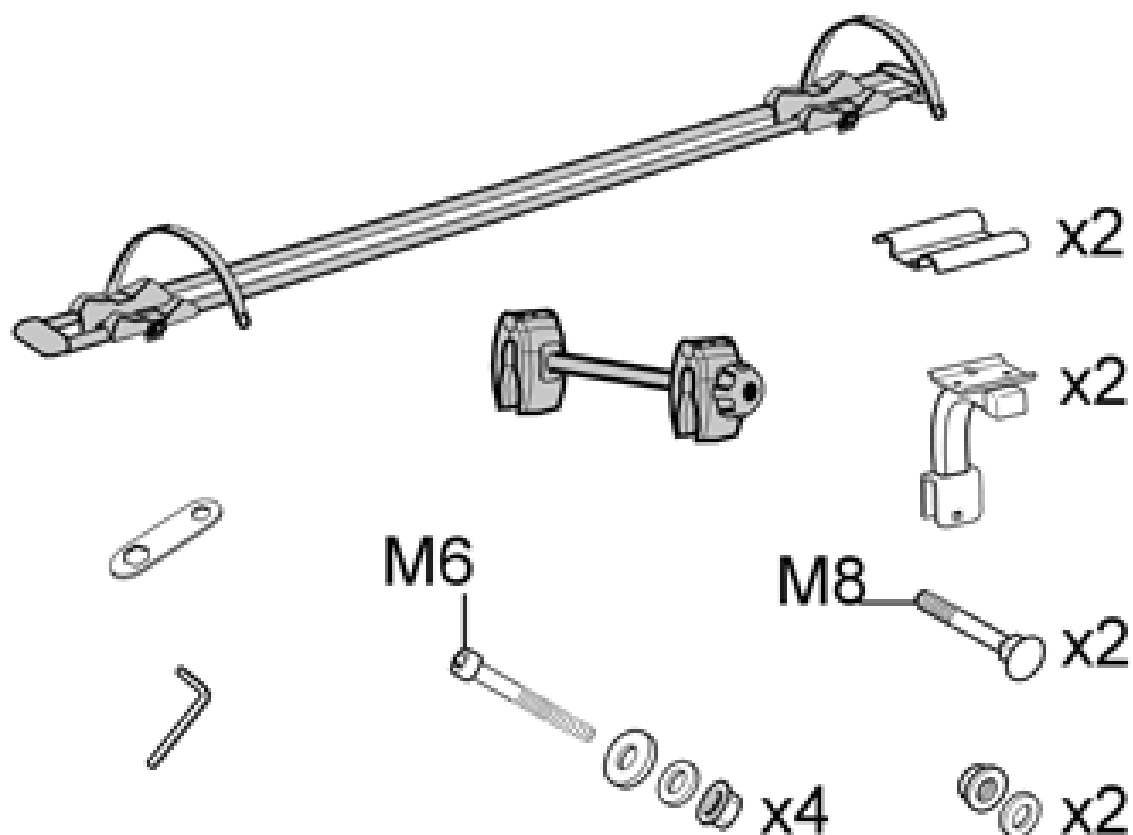
Equipment



A0000162

Installation instructions, accessories

Volvo Car Corporation Gothenburg, Sweden



R8903310

Installation instructions, accessories

Volvo Car Corporation Gothenburg, Sweden

INTRODUCTION

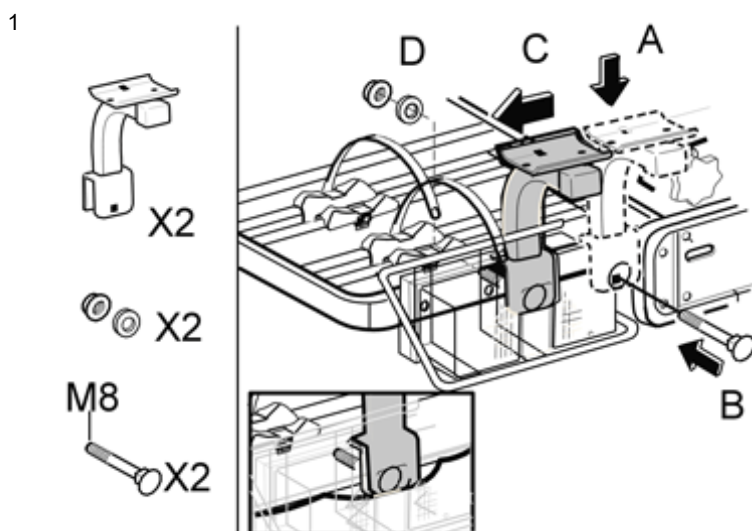
Read through all of the instructions before starting installation.

Notifications and warning texts are for your safety and to minimise the risk of something breaking during installation.

Ensure that all tools stated in the instructions are available before starting installation.

Certain steps in the instructions are only presented in the form of images. Explanatory text is also given for more complicated steps.

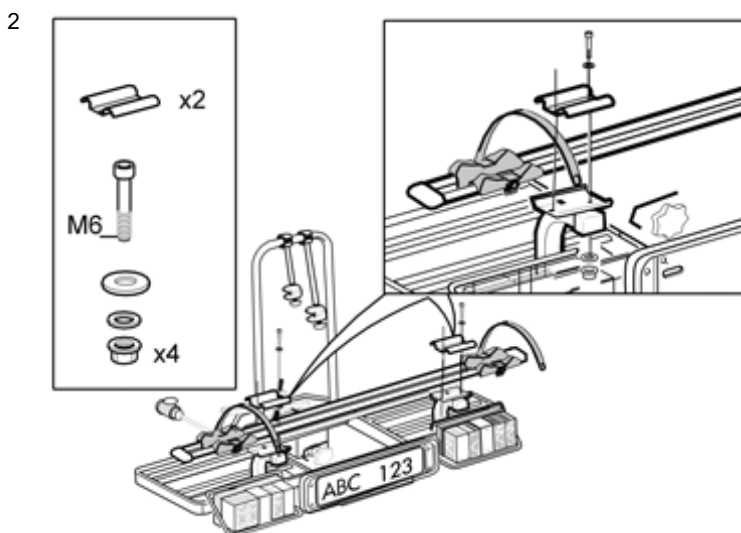
In the event of any problems with the instructions or the accessory, contact your local Volvo dealer.



R8903317

Mounting the brackets for the extra bicycle holder

Push the cable to one side when installing, as illustrated.



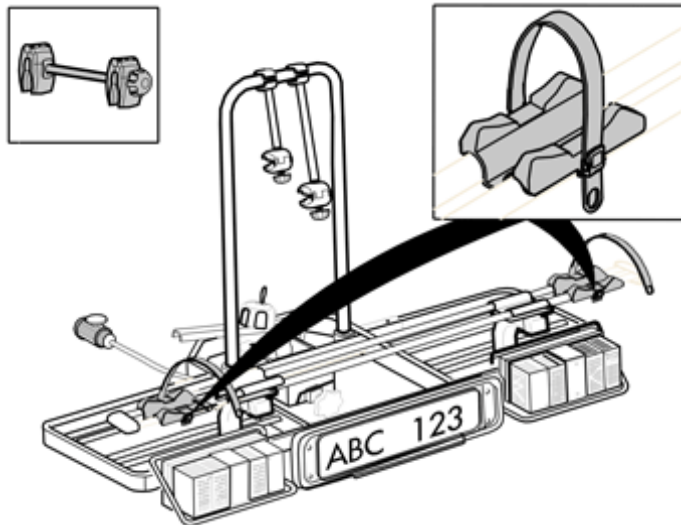
R8903311

Mounting the extra bicycle holder

Installation instructions, accessories

Volvo Car Corporation Gothenburg, Sweden

3



R8903312

Installing the wheel strap and the bicycle frame holder

Note!

When transporting an extra bicycle install the supplied bicycle frame holder high up on the frames on the second and third bicycles. Do not obstruct the high-mounted stop (brake) lamp (if applicable).