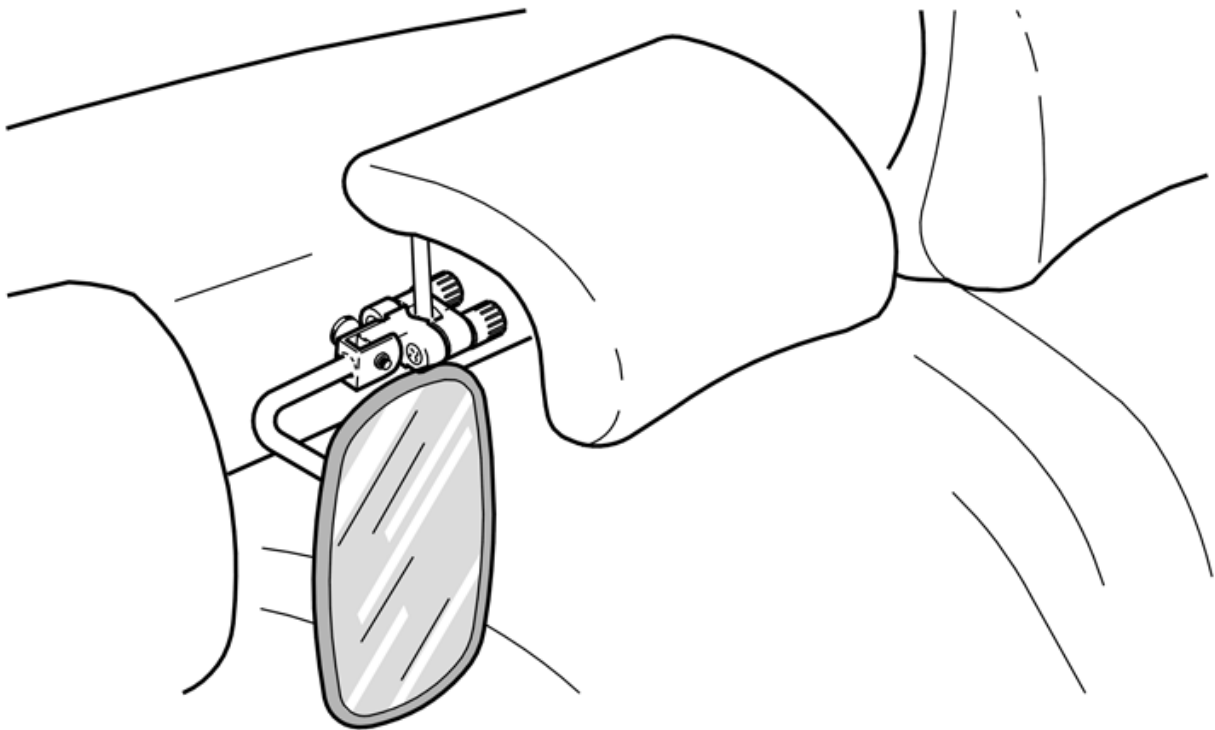


Installation instructions, accessories

Volvo Car Corporation Gothenburg, Sweden

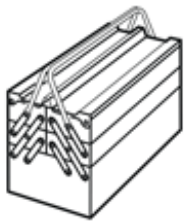
Instruction No	Version	Part. No.
9172225	1.0	

Interior rear view mirror for the child seat



A8900969

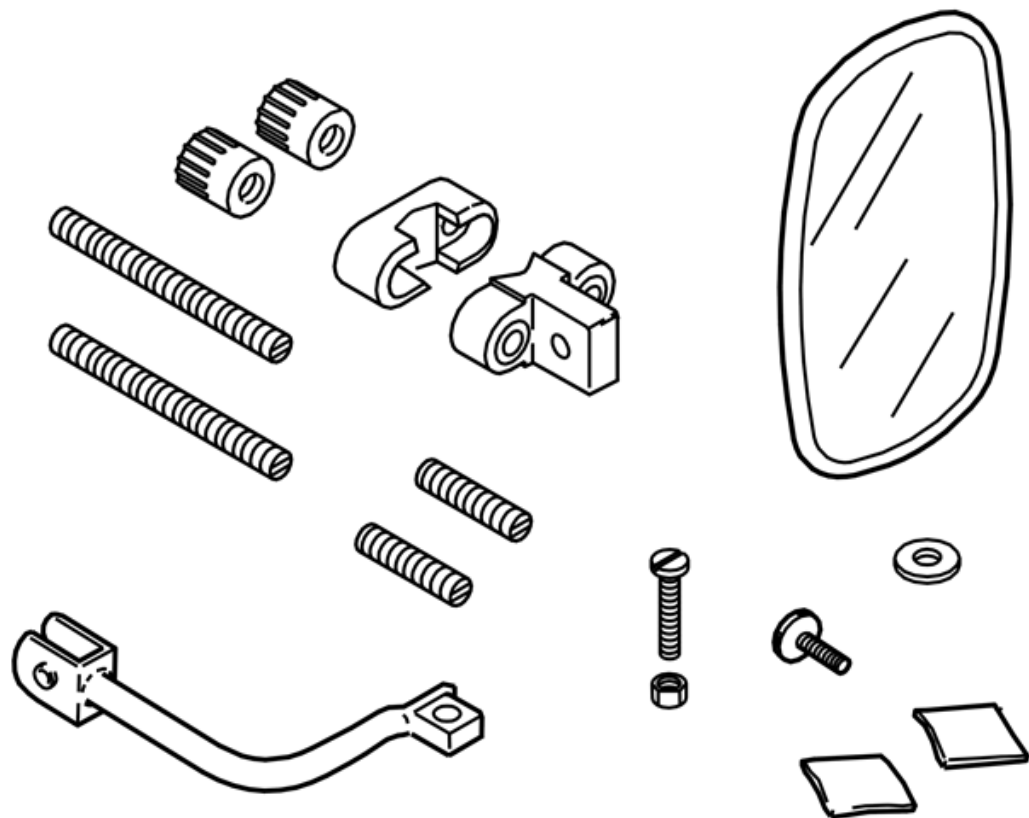
Equipment



A0000162

Installation instructions, accessories

Volvo Car Corporation Gothenburg, Sweden



A8900970

MA Reacção

Tem comentários a fazer sobre esta publicação? Contacte o concessionário mais próximo. Agradecemos a sua colaboração!

Publicação n#: MA 9172225, Publicação: 1999-11
Observações:.....
.....
.....
.....
.....
.....
.....
De:.....
Morada:.....
N# telefone:.....
Telefax:.....

Installation instructions, accessories

Volvo Car Corporation Gothenburg, Sweden

INTRODUCTION

Read through all of the instructions before starting installation.

Notifications and warning texts are for your safety and to minimise the risk of something breaking during installation.

Ensure that all tools stated in the instructions are available before starting installation.

Certain steps in the instructions are only presented in the form of images. Explanatory text is also given for more complicated steps.

In the event of any problems with the instructions or the accessory, contact your local Volvo dealer.

Note!

850/S40/V40/S70/V70(-00)/S80/V70(00-)/S60:

Use 30 mm (1 1/16") studs.

945/965/V90:

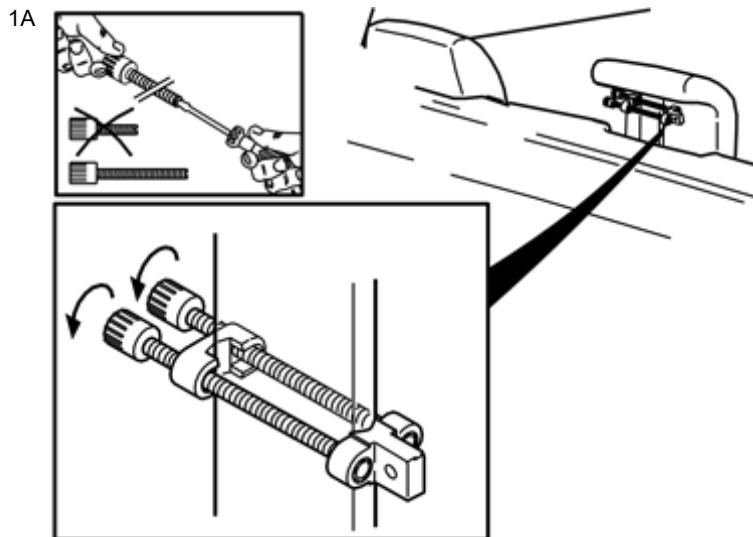
Use 40 mm (1 3/4") studs.

944/964/S90:

Use 110 mm (4 3/8") studs.

Installation instructions, accessories

Volvo Car Corporation Gothenburg, Sweden



Applies to all models:

Pull the rear seat centre head restraint up

Assemble the stud and the nut. Tighten the nut

Install the studs for the mounting using the nuts.

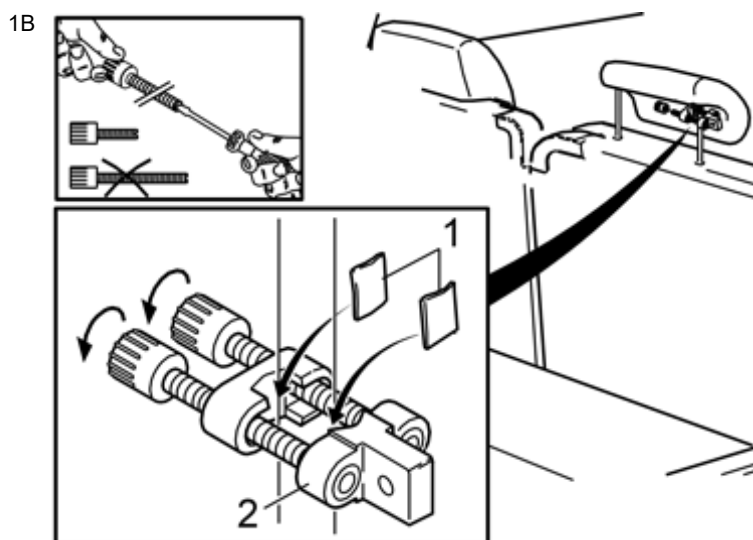
Illustration A applies to the 944 / 964 / S90

Screw the mounting into place as high up as possible on the mounting rod for the head restraint.

Illustration B applies to other models

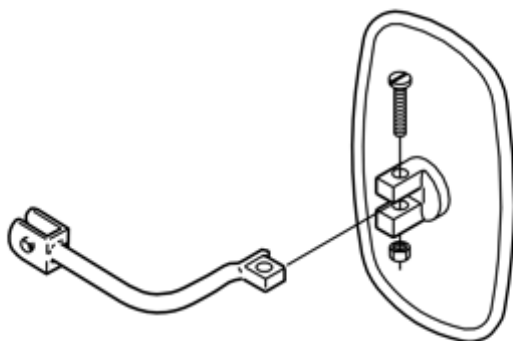
Install the shims (1) in the grooves in the mounting bracket

Screw the mounting into place as high up as possible on the mounting rod for the head restraint.



2

Screw the arm and the mirror together.

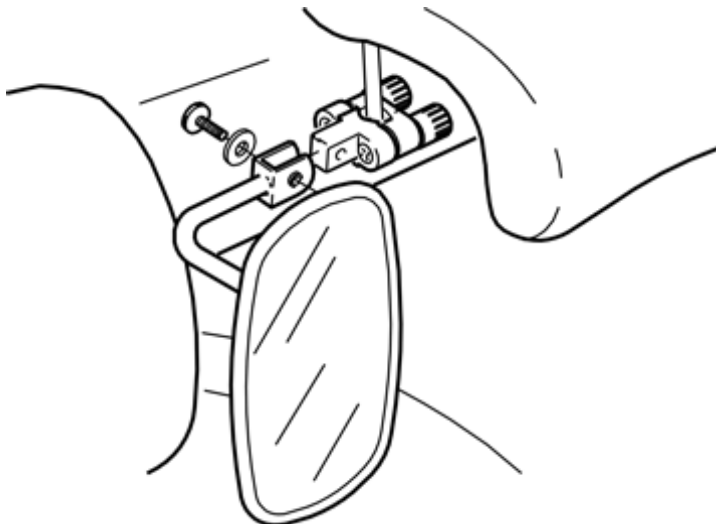


A8901008

Installation instructions, accessories

Volvo Car Corporation Gothenburg, Sweden

3



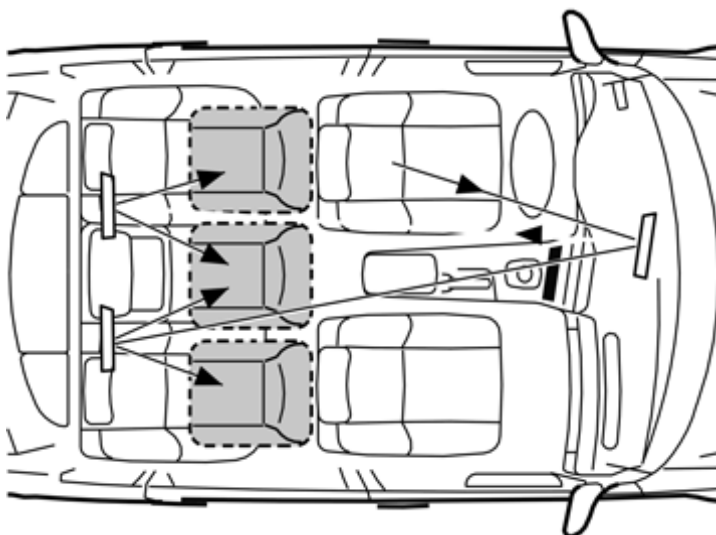
A8900973

Screw the mirror into the mounting

Depress the head restraint

Adjust the mirror so that the child seat can be seen in the mirror via the front rear view mirror.

4



A8502534

Position the mirror so that the driver can see the child in all reversed positions in the rear seat.