



Installation instructions, accessories

Volvo Car Corporation Gothenburg, Sweden

Instruction No	Version	Part. No.
31435993	1.0	31435991

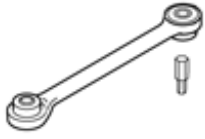
Mudflaps, rear



Installation instructions, accessories

Volvo Car Corporation Gothenburg, Sweden

Equipment



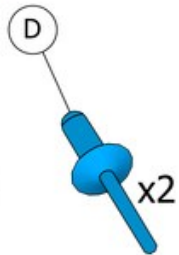
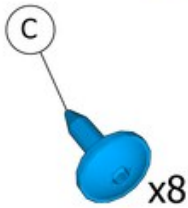
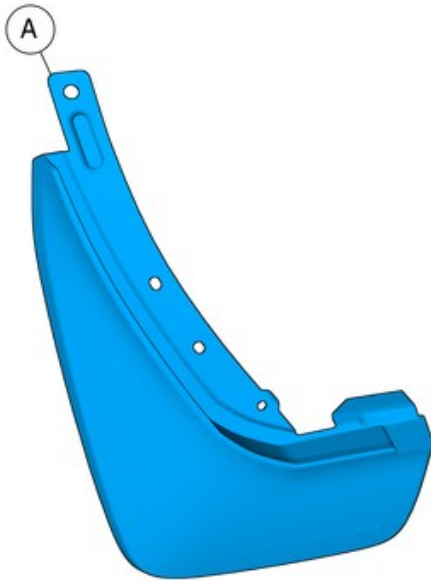
IMG-268803



IMG-239681



IMG-239940



IMG-429506



Installation instructions, accessories

Volvo Car Corporation Gothenburg, Sweden

Information

1

Read through all of the instructions before starting installation.

Notifications and warning texts are for your safety and to minimise the risk of something breaking during installation.

Ensure that all tools stated in the instructions are available before starting installation.

Certain steps in the instructions are only presented in the form of images. Explanatory text is also given for more complicated steps.

In the event of any problems with the instructions or the accessory, contact your local Volvo dealer.

Color symbols

2



Note!

This colour chart displays (in colour print and electronic version) the importance of the different colours used in the images of the method steps.

1. Used for focused component, the component with which you will do something.
2. Used as extra colors when you need to show or differentiate additional parts.
3. Used for attachments that are to be removed/installed. May be screws, clips, connectors, etc.
4. Used when the component is not fully removed from the vehicle but only hung to the side.
5. Used for standard tools and special tools.
6. Used as background color for vehicle components.

IMG-363036

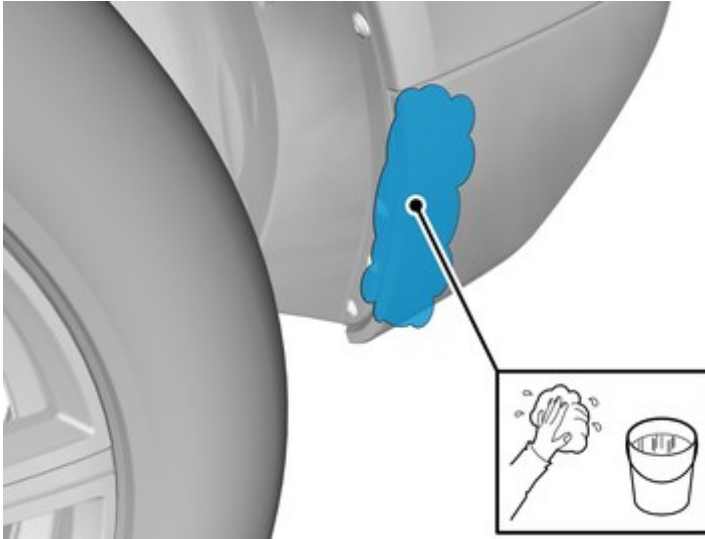
Preparation



Installation instructions, accessories

Volvo Car Corporation Gothenburg, Sweden

3

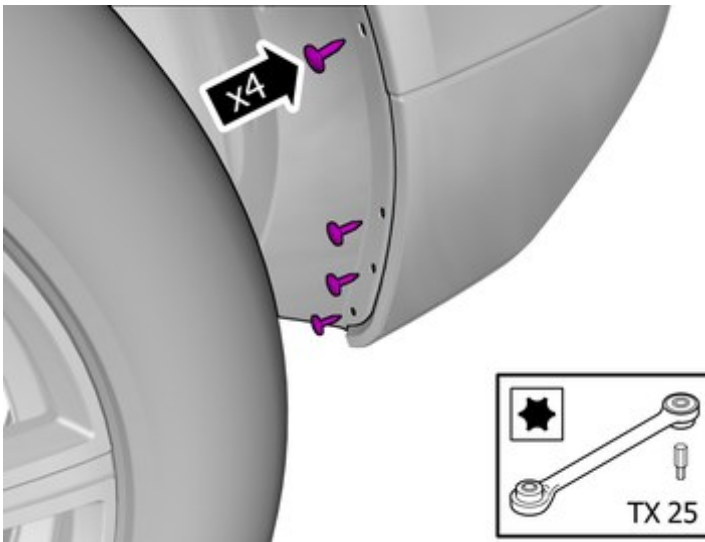


IMG-429538

Clean the surface.

Removal

4



IMG-429545

Remove the screws.

The part is not to be reused.

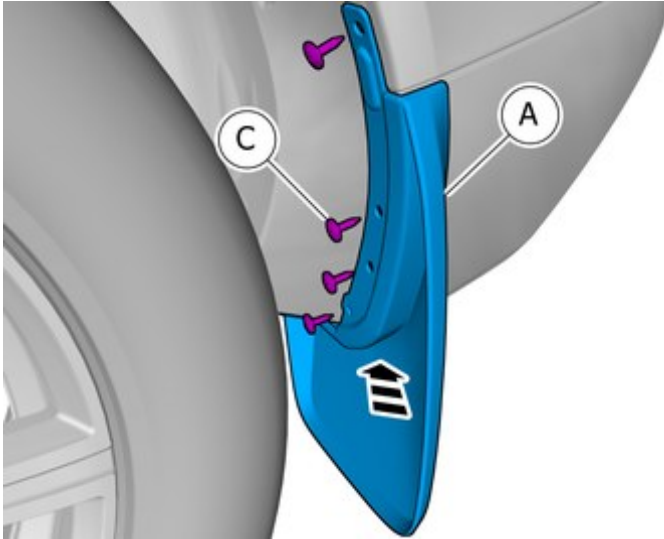
Accessory installation



Installation instructions, accessories

Volvo Car Corporation Gothenburg, Sweden

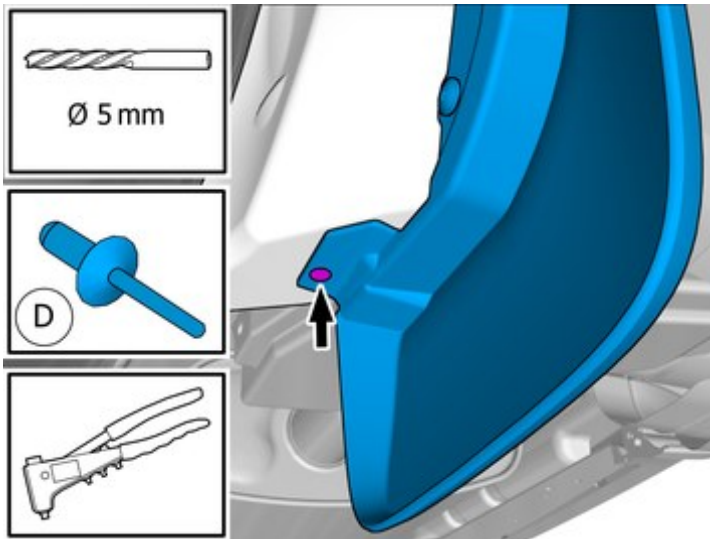
5



IMG-429551

Install component that comes with the accessory kit.

6



IMG-429555

Use a drill with the stated size

Install component that comes with the accessory kit.

7

Repeat all method steps for the other side.